



**ID #** 4106

**Naziv:** VISA F350GX

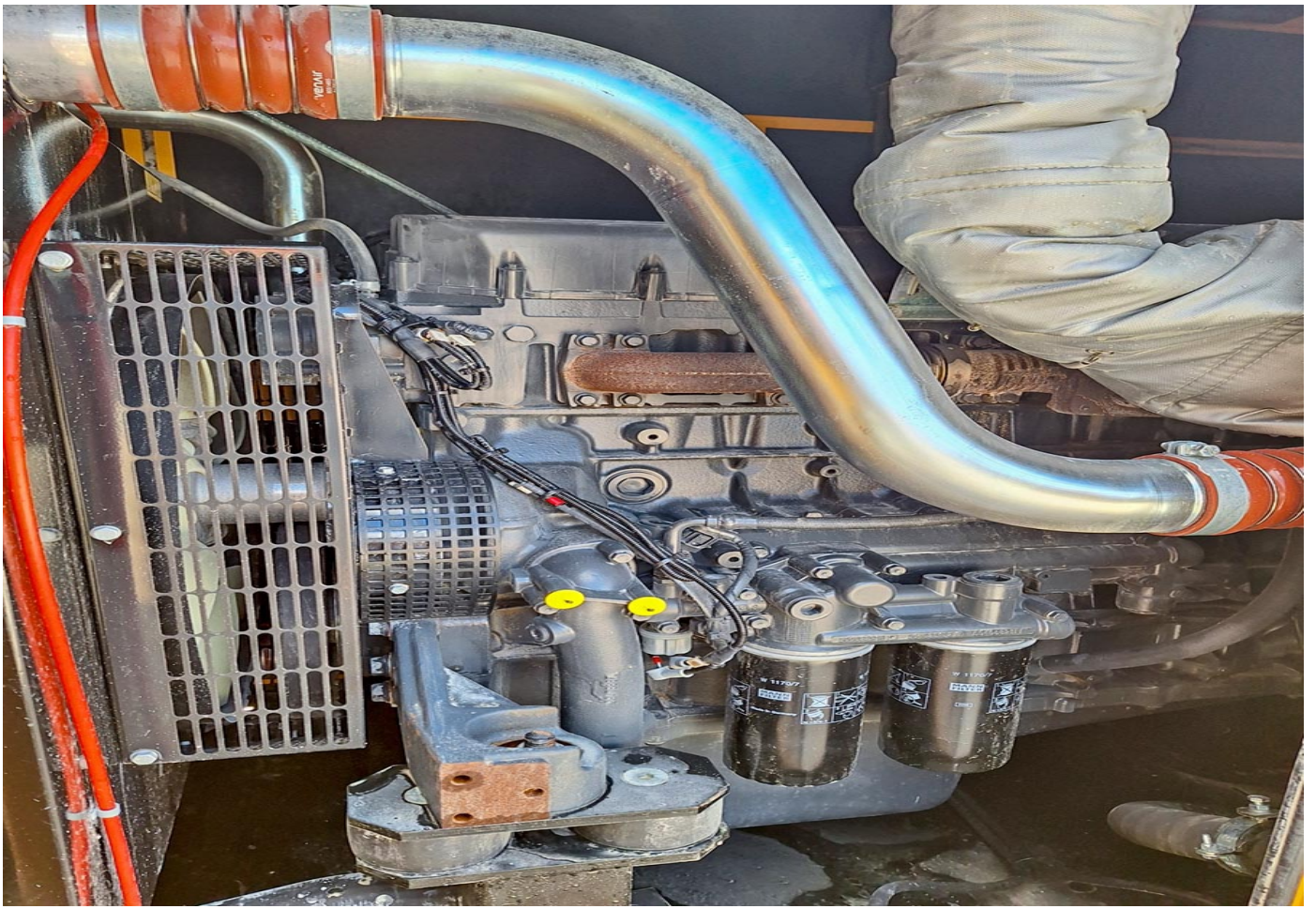
<b>Kategorija:</b>	Agregati
<b>Brend (marka):</b>	VISA
<b>Oprema:</b>	Bešumni agregat, snaga 280kW/350 kVA, 1500rpm, 50HZ, voltaža 505A, automatika
<b>Lokacija:</b>	Posušje, Bosna i Hercegovina
<b>Ispravnost stroja:</b>	Ispravan
<b>God. proizvodnje:</b>	2017
<b>Radnih sati:</b>	3000
<b>Težina stroja:</b>	4284 kg
<b>Model motora:</b>	FPT Iveco
<b>Snaga motora:</b>	360 kW
<b>Vrsta pogona:</b>	Dizel















# STAMFORD®

SERIAL NUMBER	N17B082597	DUTY	Continuous (S1)
FRAME/CORE	HCI444E1	EXCITATION VOLTAGE	48
BASE RATING KVA	350	EXCITATION CURRENT	2.3
BASE RATING KW	280	INSULATION CLASS	H
AMPERES(BR)	505.2	AMBIENT TEMPERATURE	40 c
FREQUENCY	50 Hertz	TEMPERATURE RISE	125 c
RPM	1500	THERMAL CLASSIFICATION	180 c
VOLTAGE	400	ENCLOSURE	IP23
PHASE	3	STATOR WINDING	311
PF	.8	STATOR CONNECTION	Series Star

BS 5000, PART 3 IEC 34-1 ISO 8528-3  
NEMA MG 1-32 BS EN 60034-1



BARNACK ROAD, STAMFORD, LINGS, PE9 2NB, UK







**GENERATING SET  
ISO 8528**



Made in Italy

<b>ITEM</b>	<b>GEN_SET</b>
<b>SERIAL NR.</b>	27688
<b>MODEL</b>	F350GX
<b>TYPE</b>	GALAXY
<b>MANUFACTURE YEAR</b>	2017
<b>ELECTRICAL EQUIPMENT</b>	GUARD REVOL. MAN
<b>PRP POWER (kVA)</b>	350.00
<b>PRP POWER (kW)</b>	280.00
<b>VOLTAGE (V)</b>	400 / 230
<b>AMPERE (A)</b>	505.0
<b>FREQUENCY (Hz)</b>	50
<b>POWER FACTOR</b>	0.8
<b>SPEED RPM</b>	1500
<b>PHASES</b>	3 phases + neutral
<b>GOVERNOR CLASS</b>	G2
<b>DRY WEIGHT (kg)</b>	3940
<b>WET WEIGHT (kg)</b>	4284
<b>SITE TEMP. (°C)</b>	25
<b>ALTITUDE (m)</b>	100

VISA S.p.A.  
Via I Maggio, 55 - 31043 Fontanelle (TV) ITALY  
Tel +39 0422 5091 - Fax +39 0422 509350 - www.visa.it

**PERICOLO! – DANGER!  
DANGER! – GEFAHR! - PELIGRO!**