



**ID #** 4085

**Naziv:** MERCEDES ACTROS 3241

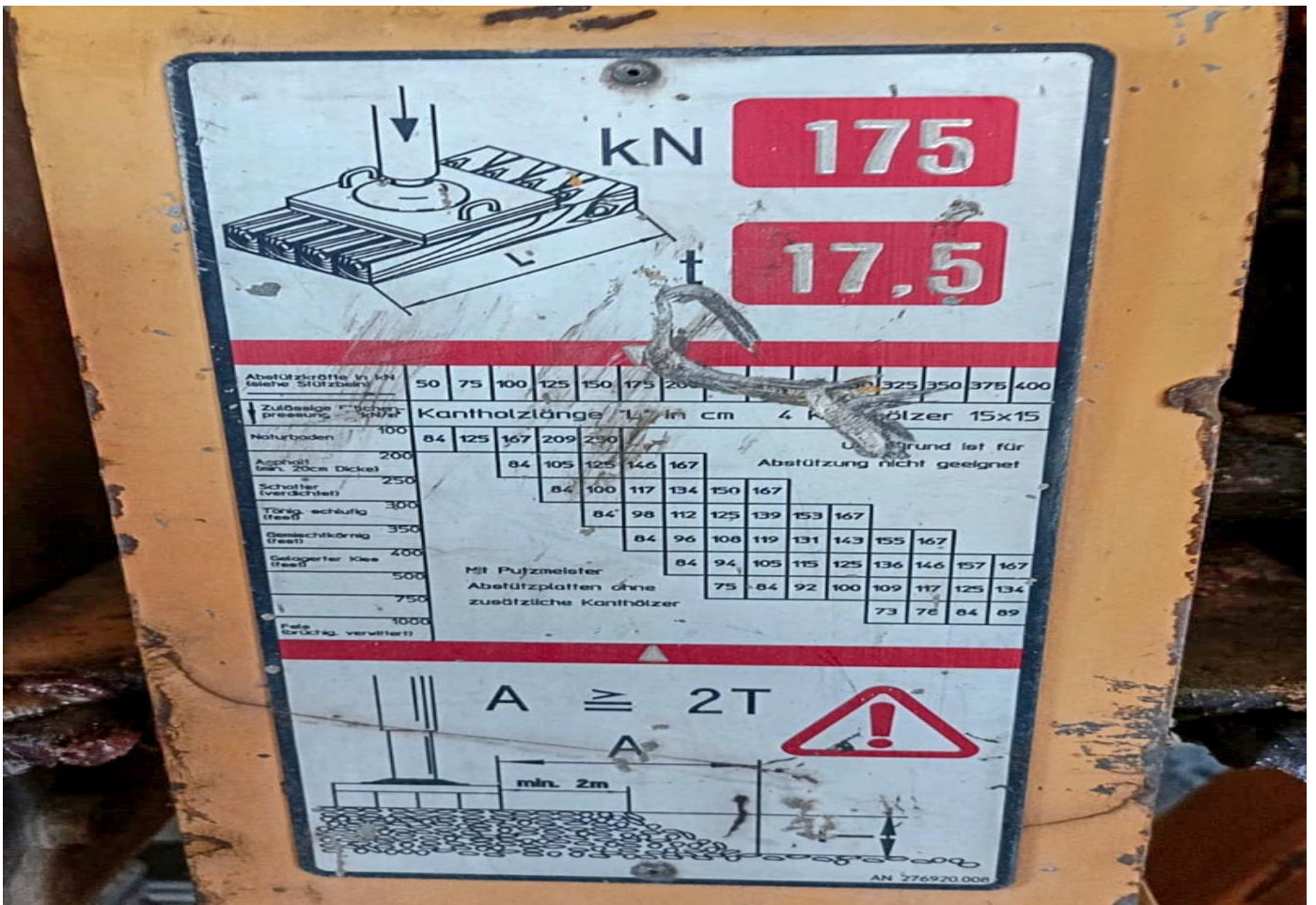
<b>Kategorija:</b>	Mikser s pumpom
<b>Brend (marka):</b>	MERCEDES
<b>Napomena:</b>	EURO 4
<b>Oprema:</b>	kamion 4 osovine, nadogradnja Putzmeister, stope, kapacitet bubnja 7m <sup>3</sup> , maks. visina pumpanja 23,8m, radna signalizacija
<b>Lokacija:</b>	Split, Hrvatska
<b>Ispravnost stroja:</b>	Ispravan
<b>God. proizvodnje:</b>	2006
<b>Težina stroja:</b>	20620 kg
<b>Model motora:</b>	Mercedes
<b>Snaga motora:</b>	300 kW
<b>Vrsta pogona:</b>	Dizel
<b>Nosivost:</b>	11380 kg
<b>Veličina gume:</b>	315/80R22.5













D- 88427 Bad Schussenried, Postfach 145

Druckbehälter nach DGRL 97/23/EG  
 Pressuro vessel according to 97/23/EC  
 Réservoir sous pression selon 97/23/C.E.

Hersteller  
 Manufacturer  
 Manufacturieri

Prüfdruck (bar) PT  
 Test pressure  
 Pression de contrôle **7,4**

Typ / Ident-Nr.  
 Type  
 Type

**MF 120993-1/956123605**

Fabrik-Nr.  
 Factory serial no.  
 No. de fabrication

**M 24845**

Baujahr  
 Year of constr.  
 Année

**2006**

V/ Liter  
 Litro  
 Litro

**650**

PS/bar

**5**

Tmax °C

**80**

Tmin °C

**-10**

CE

**0035**

Prüfzeichen  
 Mark of conformity  
 Marque de conformité



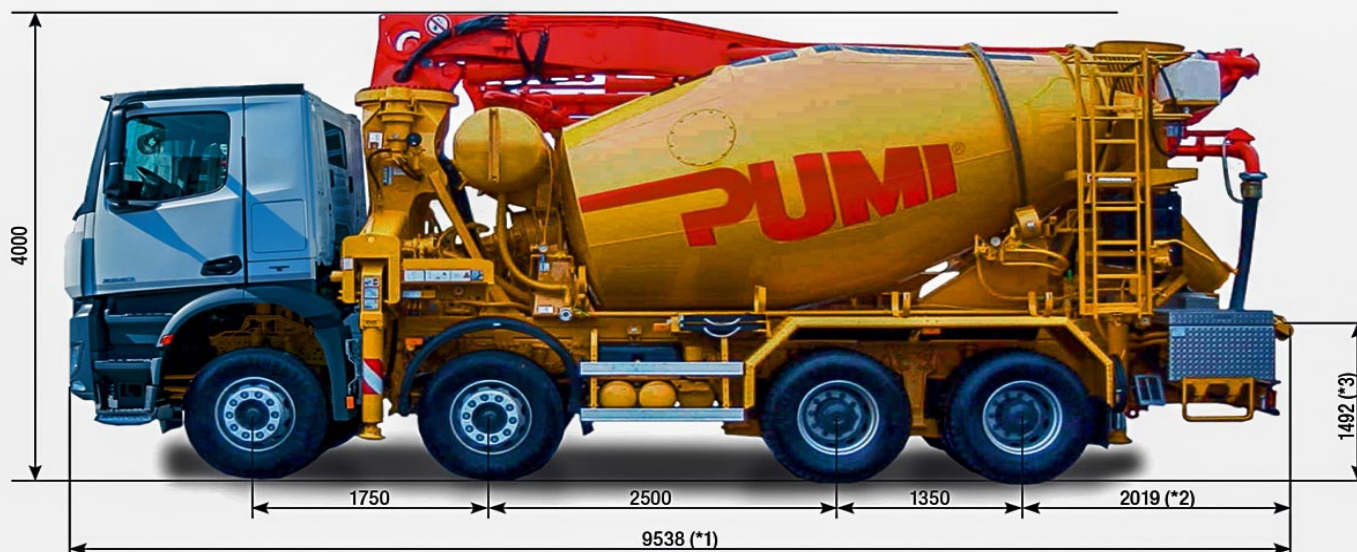
Kazalo:

- A Registracijska oznaka vozila
- B U prometu od
- C.1.1-C.4 Podaci o vlasniku vozila
- C.3.1-C.3.3 Podaci o korisniku vozila
- D.1 Marka
- D.2 Homologacijski tip
- D.3 Trgovački naziv
- E Broj šasije
- F.1 Tehnička najveća dopuštena masa [kg]
- F.2 Najveća dopuštena masa [kg]
- G Masa praznog vozila [kg]
- H Vazenje prometne dozvole
- I Datum registracije reg. oznakom pod A
- J Kategorija vozila
- K Broj tipnog odobrenja
- L Broj osovine
- P.1 Zapremina motora [cm<sup>3</sup>]
- P.2 Snaga motora [kW]
- P.3 Vrsta goriva ili izvora snage
- P.4 Nazivna brzina vrtnje motora [o/min]
- R Boja vozila
- Q Omjer snage i mase (samo za motocikle) [kW/kg]
- S.1 Broj sjedećih mjesta
- S.2 Broj stajaćih mjesta
- T Najveća brzina [km/h]
- U.1 Stacionarna buka [dB]
- U.2 Brzina vrtnje motora kod mjerenja stac. buke [o/min]
- V.7 Emisija CO<sub>2</sub> [g/km]
- V.9 Ekološka kategorija vozila
- (1) OIB vlasnika vozila
- (2) Oblik karoserije
- (3) Namjena
- (4) Datum prve registracije u RH
- (5) Dopuštena nosivost [kg]
- (6) Duljina [mm]
- (7) Širina [mm]
- (8) Visina [mm]
- (9) Broj pogonskih osovine
- (10) Najveća dopuštena osovinska opterećenja [kg]
- (11) Dimenzije pneumatika
- (12) Jedinstvena oznaka modela (JOM)
- (13) MB
- (14) Tip, Model
- (15) Dodatne dimenzije pneumatika

J	N3		
D.1	MERCEDES-BENZ		
D.2	933.30		
D.3	933.30		
E	WDB9333041L130070		
(2)	MJESALICA S PUMPOM ZA BET		
(3)	-		
B	14.09.2006	(4)	24.11.2023
F.1	32000	F.2	32000
G	20620	(5)	11380
K	-		
P.1	11946	P.2	300
P.3	Diesel		
P.4	1800	S.1	2
R	NARANČASTA		
(6)	9800	(7)	2550
(8)	3900	T	90
L	4	(9)	2
(13)	03949362		

U.1	84.00
U.2	1350
V.9	EURO IV
(10)	7500/7500/9500
(11)	315/80 R 22.5
(11)	315/80 R 22.5
(11)	315/80 R 22.5
(14)	933.30, ACTROS
D.2	-/-
(16)	N3





		*1	*2	*3
Different dimensions for pump type	CS	9538	2019	1492
	Q	9550	2550	1400

Note: Standard version. Subject to technical modifications and errors.  
 Dimensions in mm, for example MB-Arocs and PUMI CS.  
 Dimensions depending on the vehicle and pump type (see adjacent table).  
 Pictures contain optional equipments.

## Technical data

Boom TMM 24-3			
Number of arms			3
Reach height	m		23.8
Horizontal reach	gross	m	20.0
	net	m	17.6
Reach depth max.	m		12.4
Unfolding height	m		6.9
End hose length	m		3
Folding system			Z fold (Z)
Delivery line			DN 125 – 5.5

System CS	TMP 60 CS	
Output	m <sup>3</sup> /h	56
Delivery pressure	bar	57
Delivery cylinder	Ø mm	230
Stroke	mm	700

System rotor	TMP 60 Q	
Output	m <sup>3</sup> /h	58
Delivery pressure	bar	25
Pump hose	Ø mm	125

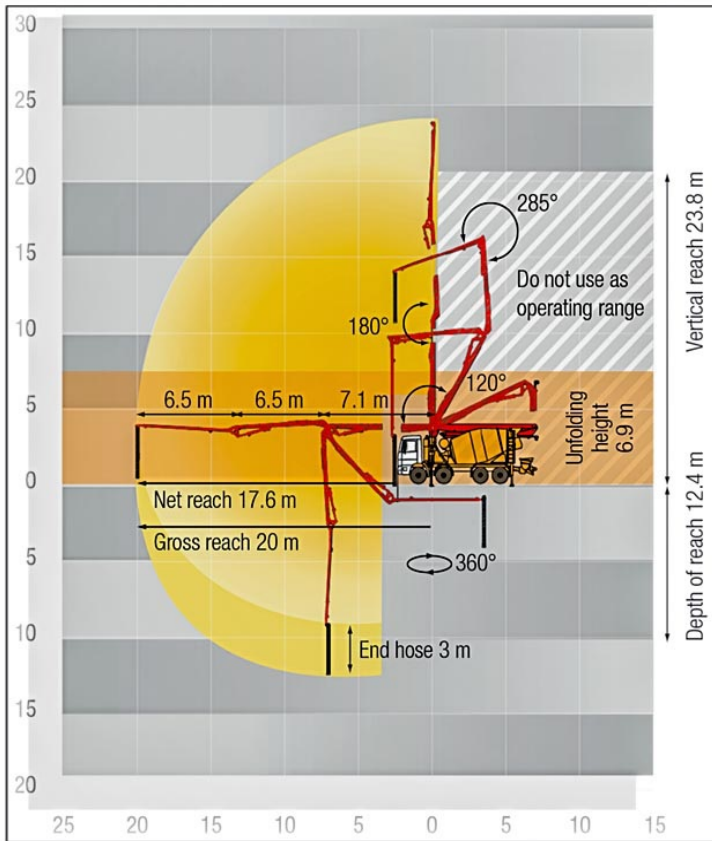
Truck mixer 7 cbm		
Nominal capacity	m <sup>3</sup>	7
Filling ratio	%	60
Drum speed	rpm	1 – 14
Water tank	l	650

Maximum outputs of 58 m<sup>3</sup>/h and maximum concrete pressures of 57 bar may be achieved, depending on the equipment of the machine.

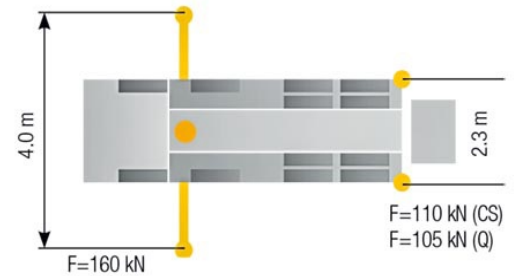
It is not possible to achieve maximum outputs and maximum concrete pressures simultaneously.

All data maximum theoretical.

## Reach information diagram



## Support



## Delivery scope standard equipment

Agitator active while driving on jobsite	EPS (Ergonic Pump System)	Rear lights and license plate lighting, integrated in underride guard
Agitator rotation automatic, dep. on pump direction	ESC full support system	Remote control with 25m cable
Agitator safety switch off automatically (RSA), RFID controlled	Electric control box with display and Ergonic diag. interface	Rubber collar on concrete hopper
Agitator, controllable via remote control or local	End hose 3 m DN125	Second drip ring on mixer drum
Alarm unit: boom not in boom cradle	Extension chute slewable, steel	Second manhole opening with additional mixer drum adjustment
Cardan shaft, maintenance-free	Faucet water tank	Splash guard over core pump (PUMI CS only)
Central lubrication hopper, electrically (PUMI CS only)	Hand working search light, unmounted	Stowage space, lockable
Central lubrication point, manually (PUMI Q only)	Holder for hammer and trowel	Support legs T 4
Chassis horn via switch box	Hopper cover, rubber	Support legs rear T 0
Chute adjustment hydr. mechan.	Hopper grid	Support plates (4x), in 2 magazines
Cleaning hose 8m+2m incl. bracket and nozzle	Hopper lighting, mounted	Tool set incl. standard equipment
Compressed air connection, rear side	Hose bracket for DN65 6x5m (for 4-axle chassis)	Towing eye
Concrete hopper with agitator	Hydraulic hose for replacement in hose pack	Underrun protection, rear side
Connection for water tank filling, both-sided	Ladder, telescopic	User manual / spare part list certified (1x Docu box, 1x CD-ROM)
Control platform, rear side	License plate lighting, LED	Wash-out port lid with locked slide pin (PUMI CS only)
Delivery cylinder, chrome-plated (PUMI CS only)	Marker lamps lateral and rear side, LED	Water supply for small quantities on hopper (1/2")
Delivery line (1-layer) DN125	Mixer discharge automatically, level indicator controlled	Water tank 650 l, pressure tank
Delivery piston "Longlife" (PUMI CS only)	Mixer drum with 4 end spiral metal sheets	Wear plates for filling and discharge hopper and slewable chute
EMC (Ergonic Mixer Control)	Mudguard aluminium, rear axle	
EMC Ergonic mixer control over radio remote control	Paintwork Putzmeister Standard	
EMC mixer comfort function over display *	Platform for cleaning with drop guard	
EMC mixer control via chassis cabin without display	Radio remote control fully prop. with display	
EOC (Ergonic Output Control)		

See quotation for exact serial delivery scope.  
Comprehensive range of options available on request.