



ID # 3092

Naziv: GOTTWALD HMK 280 E

Kategorija: Kranovi
Brend (marka): GOTTWALD
Opis: maksimalni radijus 44m, minimalni radijus 11m, maksimalna nosivost 52t, pogon: dizel motor GM 16V92T 16 cilindara 630kW, agregat SIEMENS 630 kVA
Napomena: LUČKI KRAN
kontakt mob. +387 63 329 915
Lokacija: Podgorica, Crna Gora
Ispravnost stroja: Ispravan
God. proizvodnje: 1992
Radnih sati: 16000
Težina stroja: 335000 kg
Model motora: GM 16V92T
Snaga motora: 630 kW
Vrsta pogona: Dizel



**Mobile Harbour Crane HMK 280 E
Operating Instructions**

2. Machine Description

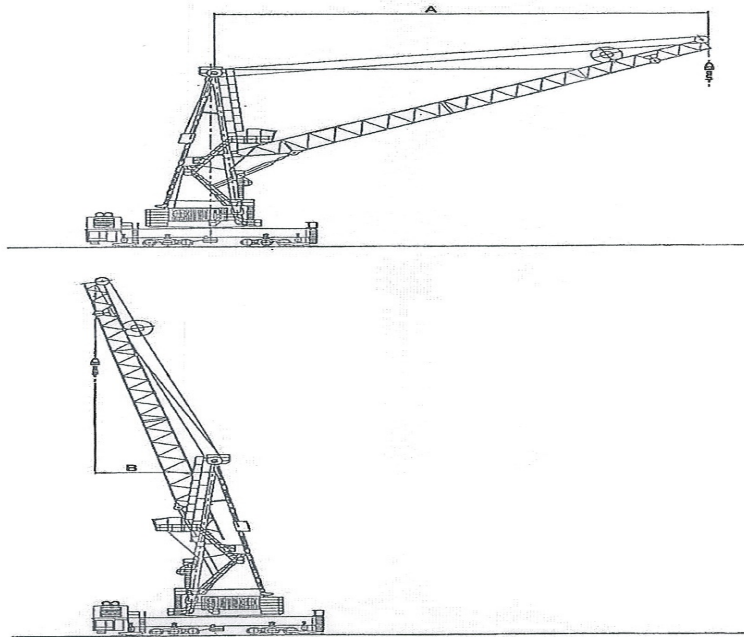
2.1 Capacity Chart *КРАТКА КАПАЦИТЕТА*

RADIJUS (m)	KAPACITETA				
	SPECIJALNO RUKOVANJE		STANDARDNO RUKOVANJE		
	TEŠKO OPTERECENJE (t)	5 ^o PLOŠNI ZA KONTAJNERE (t)	NORMALNO OPTERECENJE (t)	SA HNATA GJECOM (t)	
11	52,0	40,0	45,0	28,0	
12	52,0	40,0	45,0	28,0	
13	52,0	40,0	45,0	28,0	
14	52,0	40,0	45,0	28,0	
15	52,0	40,0	45,0	28,0	
16	52,0	40,0	45,0	28,0	
17	52,0	40,0	45,0	28,0	
18	52,0	40,0	45,0	28,0	
19	52,0	40,0	45,0	28,0	
20	52,0	40,0	45,0	28,0	
21	52,0	40,0	45,0	28,0	
22	52,0	40,0	45,0	28,0	
23	52,0	40,0	45,0	28,0	
24	52,0	40,0	45,0	28,0	
25	52,0	40,0	45,0	28,0	
26	52,0	40,0	45,0	28,0	
27	52,0	40,0	45,0	28,0	
28	52,0	40,0	45,0	28,0	
29	52,0	40,0	45,0	27,0	
30	52,0	40,0	45,0	26,0	
31	52,0	40,0	45,0	25,0	
32	52,0	40,0	45,0	24,0	
33	50,5	40,0	45,0	23,0	
34	49,0	40,0	44,0	22,5	
35	47,0	40,0	42,0	22,0	
36	45,0	38,0	40,5	21,5	
37	43,5	36,5	39,0	21,0	
38	41,5	34,5	37,5	20,5	
39	40,0	33,0	36,0	20,0	
40	38,5	31,5	34,5	19,5	
41	37,0	30,0	33,5	19,0	
42	35,5	28,5	32,5	18,6	
43	34,5	27,5	31,5	18,3	
44	33,0	26,0	30,0	18,0	

Capacities: Normal- and heavyload = load at hook
 Spreader = load at spreader Spreader : 8,6 t
 Grab = load at rops

MANNESMANN DEMAG
GOTTWALD

5.1.12

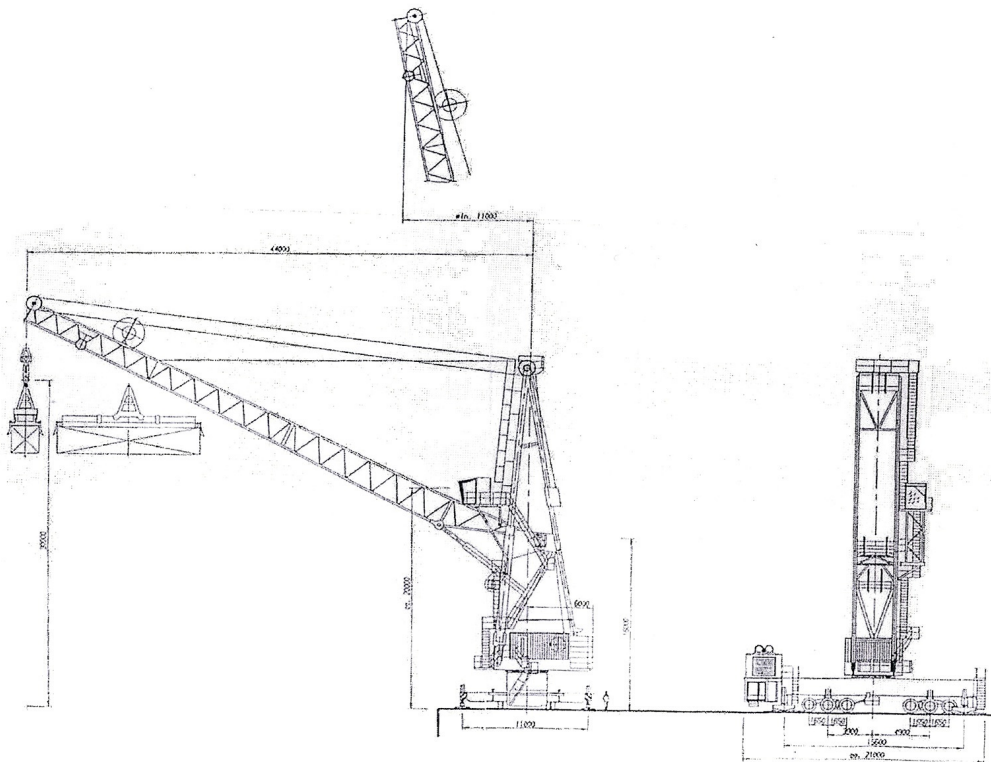


BSE

Mobile Harbour Crane HMK 280 E
Operating Instructions

DIZEL MOTOR	PROIZVODAC	G M
	TIP	16V92T
	Model	16 CILINDARA V-MOTOR
	VRSTA JAGORJEVANJA	Diesel
	HLADENJE	VODA
	IZLAZ	630 kW PRI 1.500 r.p.m.
	POTROSNJA	cca 230 g/kWh
TANK GORIVA	KAPACITET GL.TANKA	cca 9.000 ltrs. l
	KAPACITET DRUGOSTANKA	cca 500 ltrs. l
AGREGAT	PROIZVODAC	SIEMENS
	IZLAZ	630 kVA
BRZINE		
BRZINE VITCA	KAPACITET 18,0 t	0 - 70,0 m/min
	KAPACITET 40,0 t	0 - 40,0 m/min
	KAPACITET 52,0 t	0 - 30,0 m/min
BRZINA OKRETANJA	BRZINA ROTACIJE PRI NORMATIVNOM OPTEREĆENJU	0 - 1,35 r.p.m. OBRTAJ / MIN
BRZINA DZIBA	BRZINA DIZANJA TRI NORMATIVNOM OPTEREĆENJU	0 - 60,0 m/min
BRZINA VOŽNJE	BRZINA VOŽNJE MOGUĆNOST USPONA	0 - 80,0 m/min max. 6,0 %

2.3

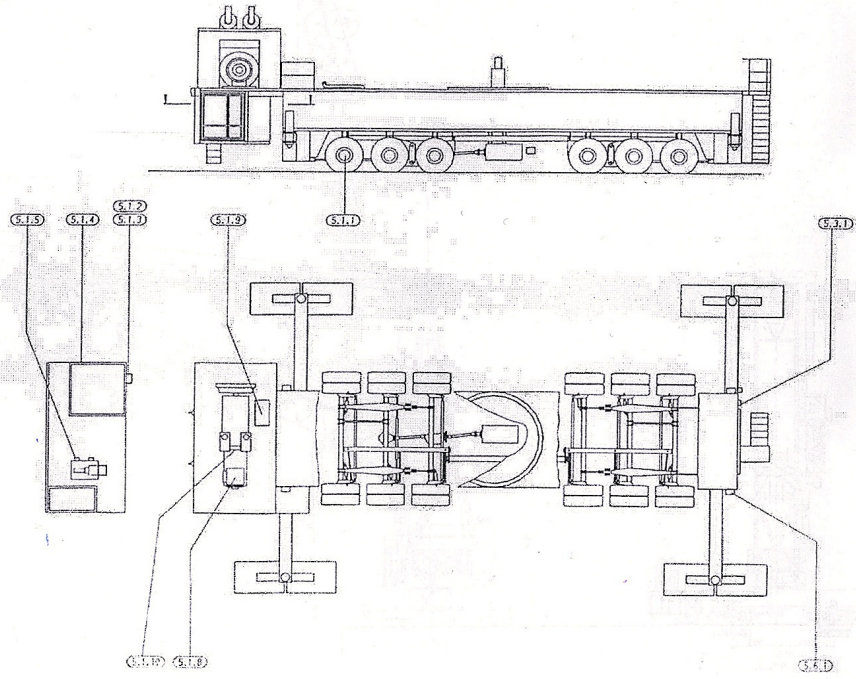


**Mobile Harbour Crane HMK 280 E
Operating Instructions**

2.2 TEHNIČKI PODACI

DIMENZIJE	DUŽINA PODVOZA	19,8 m		
	ŠIRINA PODVOZA	8,5 m		
	POSTOJEĆA/OSNOVA STABILIZATORA	11,0 m x 15,6 m		
	DIMENZIJE STABILIZATORA	1,2 m x 1,8 m		
	RADJUS OKRETAJAJA STRAŽNJEG KRAJA	6,0 m		
	TOČKA OSLOŃCA TRI PODIGNUTOH DŽIBU	approx. 16,0 m		
	VISINA POGLEDA IZ BUBINE	approx. 20,0 m		
RADNI DOHET	max. Radius	44,0 m		
	min. Radius	11,0 m		
VISINA DIZANJA KRANA	IZNAD TLA	30,0 m		
	ISTOD TLA	15,0 m		
TEŽINE	KRAN U RADU	cca approx. 335,0 t		
	UTEŃ, FIKSNI	cca approx. 83,5 t		
	UTEŃ, POKRETNI	cca approx. 20,0 t		
Wind Loadings	KRAN U VOŽŃI	SILA	BRZINA	PRITISAK
	KRAN STABILIZIRAN U RADU	12	32,7 - 36,9 m/s	76,0 kg/m ²
	KRAN STABILIZIRAN IZVAN RADA	9	20,8 - 24,0 m/s	30,0 kg/m ²
		14	41,5 - 46,1 m/s	120,0 kg/m ²

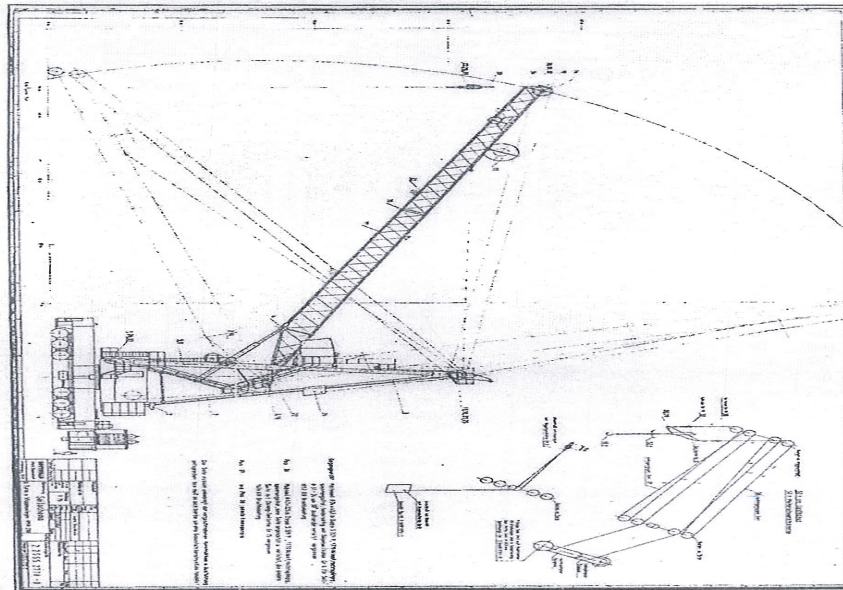
6.3



UC 070
Mobile Harbour Crane
HMK 280 E



13.0 Project Drawing



Subject to technical modification without prior notice!

HMK 280 E TD / P.-No.: UC 070

Page 8 of 8

07th August 2007

Technical data are only for general information

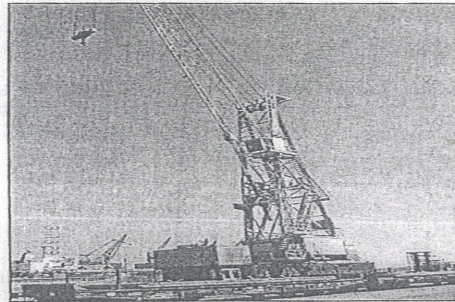
Gottwald Port Technology
Field Applications
Used Cranes
www.gottwald.com

gal. 1552
 ser. br. 128117
 tip. HMK 280 E
GOTTWALD
 port technology

UC 070

MOBILE HARBOUR CRANE
HMK 280 E

MOBILNA LUČKA DIZALICA
 HMK 280 E



7 ADNI (JAT)
 PRVO PUSTANJE I RAD

CCA 16,000 h
 1992

KAPACITETI DIZANJA

DIZANJE
 HRVATA UKOL
 DIZANJE
 HRVATA UKOL

TESTNO OPTEREĆ. max. t	TESTNO OPTEREĆ. max. radius	max. t	max. radius
52t / 30m	44m / 30t	25t / 44m	44m / 25t

SALES PRICE EUR

on request

Price Basis: in the present condition as to be inspected, FAS location, net of transportation costs, net of costs for dismantling and erection, net of costs for training and documentation, net of any commission.

HMK 280 E TD / P.-No.: UC 070

Page 1 of 8

07th August 2007

Technical data are only for general information

