



TEREX | FINLAY



TC-80

TC-80 TRACKED CONVEYOR

SPECIFICATION:

Conveyor Length:		22.8m (74' 10")
Belt Width:		1.05m (42")
Net Engine Power:	Tier 3:	Deutz D2011 L041 36.4kW (48hp)
	Tier 4F:	Deutz TD 2.9 L04 45kW (60hp)
	Stg V:	Deutz TD 2.9 L04 45kW (60hp)
Discharge height:		10.41m (34' 1") @ 25°
Weight:		16,750kg (36,927lbs)



CONVEYOR

Conveyor Length	22.8m (74' 10")
Belt Width	1050mm (42")
Max Belt speed of Conveyor:	136 mpm
Optimum Discharge @ 18°	8.34m (27' 4")
Stockpile Capacity @ 18° = 1070m³ / 1399yd³ @ 37° angle of repose	
Max Discharge Height @ 25°	10.41m (34' 1")
Stockpile Capacity @ 25° = 2080m³ / 2721yd³ @ 37° angle of repose	
Capacity	Up to 500 TPH



Deutz D2011 36.4kW(49hp) Engine

UNDERCARRIAGE

Undercarriage with heavy duty tracks. 4000mm centres, 400mm shoe.

GENERAL

Pinless deployment

External conveyor belt adjustment

Engine prestart delay & siren

Low level greasing

Emergency stops (3 nr)

Safety guards in compliance with machinery directive



Full Length Conveyor Skirting



Feed Boot Liner Extension and Dust Covers



Transport mode

POWERUNIT

Diesel Hydraulic

Engine (Tier 3) Deutz D2011 L041 - 36.4kW (48hp)

Tier 4 Final Deutz TD 2.9 L04 45kW (60hp)

Stage V Deutz TD 2.9 L04 45kW (60hp)

Fuel Tank Volume 200 litres

Hydraulic Oil Cooler Standard



Working mode



Working mode

OPTIONS

Dual power conveyor drive (Allows either hydraulic or electric conveyor drive. Diesel hydraulic deployment)

Twin Hydraulic drive

6mm AR400 Steel Wear Feedboot Liners

20mm Rubber Wear Feedboot Liners

Feedboot Extension c/w Steelwear Liners

Feedboot Extension c/w 20mm rubber Wear Liners

Feedboot Extension c/w 6mm AR400 Steelwear Liners

Impact Bed at Feedboot area

Impact Rollers at Feedboot area

Large Capacity Biomass Hopper (including landing legs and full length impact bed)

Blade type / Primary scraper

Conveyor fitted with Chevron belt 3 ply x 4+2 covers

Conveyor fitted with Heavy duty plain belt EP500 4 ply x 8+2 covers

Conveyor Under Guarding up To 2.5 Meters @12degree incline

Conveyor Head drum Guarding

Conveyor Dust covers

Conveyor Water Dust Suppression (Spray bar only)

Conveyor Full length skirting

Powerunit c/w Hydraulic oil, ISO 68 - (Recommended for ambient temperatures between +15 to +50°C)

Radio remote control system for crawler tracks

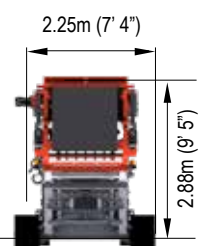
Pull cord emergency stop to control panel side

Pull cord emergency stop to non- control panel side

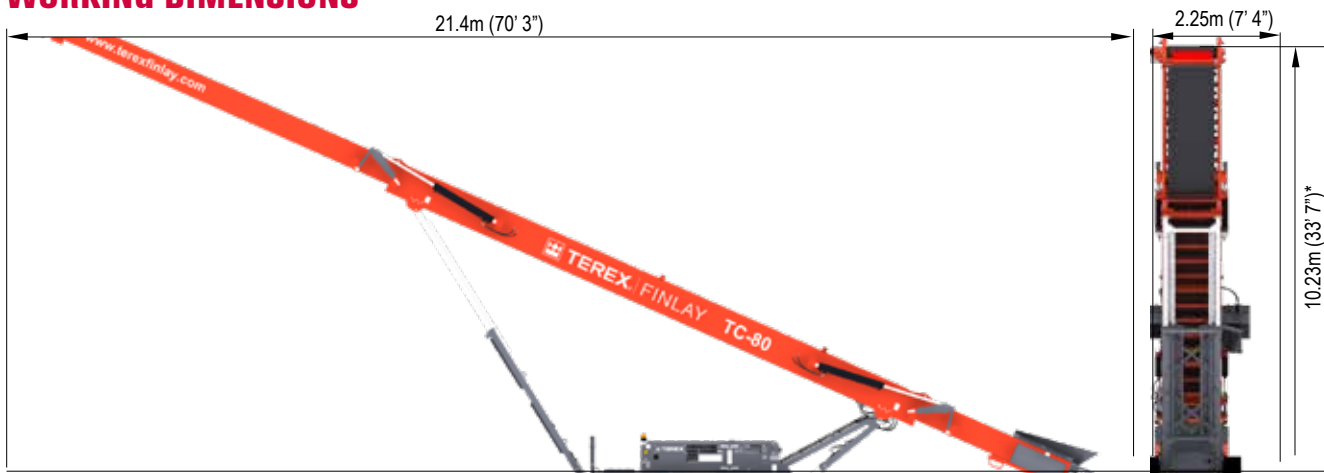
Special paint colour (if different from above). RAL must be specified on order

Overband magnet option complete with hydraulic kit and support frame

TRANSPORT DIMENSIONS



WORKING DIMENSIONS



MACHINE WEIGHT: 16,750kg (36,927lbs)

WORKS FOR YOU.™

