



# DIECI



**SAMSON VS EVO2**



60.9 VS



65.8 VS

PERFORMANCE				
Machine model	SAMSON 65.8 VS EVO2	SAMSON 65.8 VS EVO2	SAMSON 60.9 VS EVO2	SAMSON 60.9 VS EVO2
Maximum capacity	6500 kg (14330 lb)	6500 kg (14330 lb)	6000 kg (13228 lb)	6000 kg (13228 lb)
Maximum lifting height on wheels	7,70 m (25 ft)	7,70 m (25 ft)	8,60 m (28 ft)	8,60 m (28 ft)
Maximum horizontal extension on wheels	4,20 m (14 ft)	4,20 m (14 ft)	4,90 m (16 ft)	4,90 m (16 ft)
Fork swiveling angle	144°	144°	144°	144°
Pull-out force	5700 daN (12814 lbf)	5700 daN (12814 lbf)	5700 daN (12814 lbf)	5700 daN (12814 lbf)
Towing force	7300 daN (16411 lbf)	7300 daN (16411 lbf)	7300 daN (16411 lbf)	7300 daN (16411 lbf)
Maximum climb angle	40%	40%	40%	40%
Unladen weight	10900 kg (24030 lb)	10900 kg (24030 lb)	11100 kg (24471 lb)	11100 kg (24471 lb)
Max speed (referred to wheels with maximum permitted diameter)	40 km/h (24,9 mph)	40 km/h (24,9 mph)	40 km/h (24,9 mph)	40 km/h (24,9 mph)
BOOM				
Machine model	SAMSON 65.8 VS EVO2	SAMSON 65.8 VS EVO2	SAMSON 60.9 VS EVO2	SAMSON 60.9 VS EVO2
Lifting	10,5 s	10,5 s	11,0 s	11,0 s
Getting off the basket	6,6 s	6,6 s	6,9 s	6,9 s
Extension	5,5 s	5,5 s	6,4 s	6,4 s
Retraction	2,4 s	2,4 s	2,8 s	2,8 s
Forward swiveling	2,8 s	2,8 s	2,8 s	2,8 s
Reverse swiveling	1,9 s	1,9 s	1,9 s	1,9 s
ENGINE				
Machine model	SAMSON 65.8 VS EVO2	SAMSON 65.8 VS EVO2	SAMSON 60.9 VS EVO2	SAMSON 60.9 VS EVO2
Brand	FPT	FPT	FPT	FPT
Nominal power	96 kW (129 HP)	103 kW (138 HP)	96 kW (129 HP)	103 kW (138 HP)
@rpm	2200 rpm	2200 rpm	2200 rpm	2200 rpm
Peak power	105 kW (141 HP)	113 kW (152 HP)	105 kW (141 HP)	113 kW (152 HP)
@rpm	1900 rpm	1900 rpm	1900 rpm	1900 rpm
Operation	4-stroke	4-stroke	4-stroke	4-stroke
Injection	Electronic, Common Rail	Electronic, Common Rail	Electronic, Common Rail	Electronic, Common Rail
Number and arrangement of cylinders	4, Vertical in line	4, Vertical in line	4, Vertical in line	4, Vertical in line
Displacement	4485 cm <sup>3</sup> (274 in <sup>3</sup> )	4485 cm <sup>3</sup> (274 in <sup>3</sup> )	4485 cm <sup>3</sup> (274 in <sup>3</sup> )	4485 cm <sup>3</sup> (274 in <sup>3</sup> )
Consumption	208 g/kWh (342,16 lb/Hp h)	208 g/kWh (342,16 lb/Hp h)	208 g/kWh (342,16 lb/Hp h)	208 g/kWh (342,16 lb/Hp h)
@rpm	1900 rpm	1900 rpm	1900 rpm	1900 rpm
Emission standards	Stage IIIB/Tier 4i	Stage IIIB/Tier 4i	Stage IIIB/Tier 4i	Stage IIIB/Tier 4i
Exhaust gas treatment	SCR (AdBlue)	SCR (AdBlue)	SCR (AdBlue)	SCR (AdBlue)
Cooling system	Liquid	Liquid	Liquid	Liquid
Intake	16-valve turbo compressor, aftercooler	16-valve turbo compressor, aftercooler	16-valve turbo compressor, aftercooler	16-valve turbo compressor, aftercooler
DIFFERENTIAL AXLES				
Machine model	SAMSON 65.8 VS EVO2	SAMSON 65.8 VS EVO2	SAMSON 60.9 VS EVO2	SAMSON 60.9 VS EVO2
Axles type	2 steering, with 4 planetary reduction gears	2 steering, with 4 planetary reduction gears	2 steering, with 4 planetary reduction gears	2 steering, with 4 planetary reduction gears
Type of steering	4 wheels / transversal / 2 wheels	4 wheels / transversal / 2 wheels	4 wheels / transversal / 2 wheels	4 wheels / transversal / 2 wheels
Front axle	Rigid (Levelling upon request)	Rigid (Levelling upon request)	Rigid (Levelling upon request)	Rigid (Levelling upon request)
Rear axle	Swinging	Swinging	Swinging	Swinging
Service braking	Oil bath with servo brake on front and rear axle with double hydraulic system	Oil bath with servo brake on front and rear axle with double hydraulic system	Oil bath with servo brake on front and rear axle with double hydraulic system	Oil bath with servo brake on front and rear axle with double hydraulic system
Parking braking	Negative actuation with electrical control	Negative actuation with electrical control	Negative actuation with electrical control	Negative actuation with electrical control
HYDRAULIC SYSTEM				
Machine model	SAMSON 65.8 VS EVO2	SAMSON 65.8 VS EVO2	SAMSON 60.9 VS EVO2	SAMSON 60.9 VS EVO2
Hydraulic pump type	Variable displacement with Load Sensing	Variable displacement with Load Sensing	Variable displacement with Load Sensing	Variable displacement with Load Sensing
Hydraulic pump capacity	185 L/min (48,9 gal/min)	185 L/min (48,9 gal/min)	185 L/min (48,9 gal/min)	185 L/min (48,9 gal/min)
Max. operating pressure	26,0 MPa (3771 psi)	26,0 MPa (3771 psi)	26,0 MPa (3771 psi)	26,0 MPa (3771 psi)
Distributor control	4in1 proportional Joystick	4in1 proportional Joystick	4in1 proportional Joystick	4in1 proportional Joystick
REFUELING				
Machine model	SAMSON 65.8 VS EVO2	SAMSON 65.8 VS EVO2	SAMSON 60.9 VS EVO2	SAMSON 60.9 VS EVO2
Hydraulic system (total)	160,0 L (42,27 gal)	160,0 L (42,27 gal)	160,0 L (42,27 gal)	160,0 L (42,27 gal)
Diesel tank	125,0 L (33,02 gal)	125,0 L (33,02 gal)	125,0 L (33,02 gal)	125,0 L (33,02 gal)
AdBlue tank	27,0 L (7,13 gal)	27,0 L (7,13 gal)	27,0 L (7,13 gal)	27,0 L (7,13 gal)

## TRANSMISSION

Machine model	SAMSON 65.8 VS EVO2	SAMSON 65.8 VS EVO2	SAMSON 60.9 VS EVO2	SAMSON 60.9 VS EVO2
Transmission type	Hydrostatic single speed Vario System EVO2 with electronic control	Hydrostatic single speed Vario System EVO2 with electronic control	Hydrostatic single speed Vario System EVO2 with electronic control	Hydrostatic single speed Vario System EVO2 with electronic control
Reversal	Electro-Hydraulic	Electro-Hydraulic	Electro-Hydraulic	Electro-Hydraulic
Inching	With electronic pedal for controlled forward movement	With electronic pedal for controlled forward movement	With electronic pedal for controlled forward movement	With electronic pedal for controlled forward movement
Drive mode	Automotive, Eco, Loader, Creeper	Automotive, Eco, Loader, Creeper	Automotive, Eco, Loader, Creeper	Automotive, Eco, Loader, Creeper

## TOWING CAPACITY (upon request)

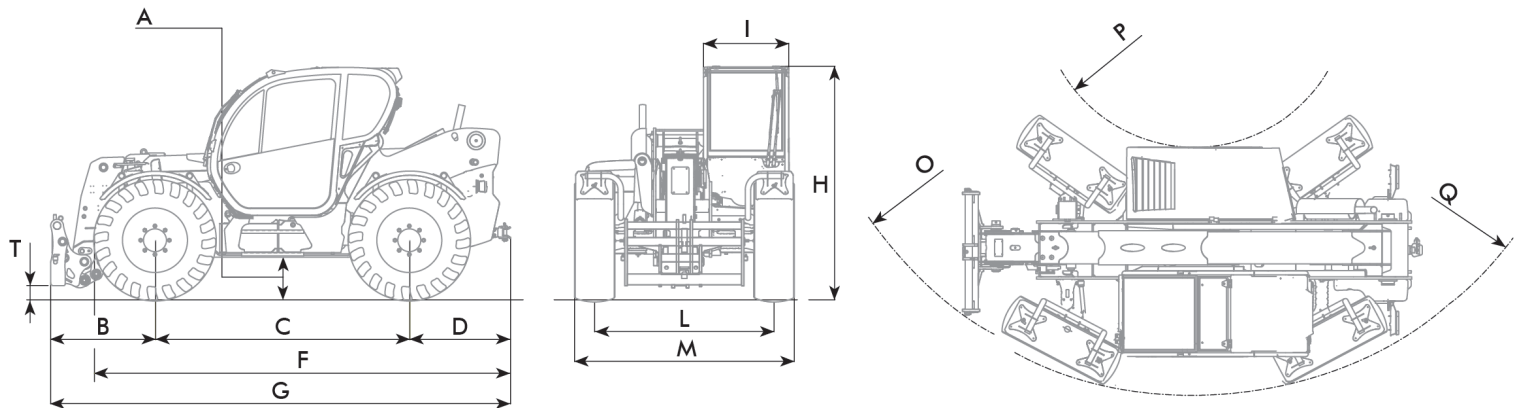
Machine model	SAMSON 65.8 VS EVO2	SAMSON 65.8 VS EVO2	SAMSON 60.9 VS EVO2	SAMSON 60.9 VS EVO2
Unbraked trailer	6000 kg (13228 lb)	6000 kg (13228 lb)	6000 kg (13228 lb)	6000 kg (13228 lb)
Inertia braking	9000 kg (19842 lb)	9000 kg (19842 lb)	9000 kg (19842 lb)	9000 kg (19842 lb)
Mechanical braking	6000 kg (13228 lb)	6000 kg (13228 lb)	6000 kg (13228 lb)	6000 kg (13228 lb)
Hydraulic/pneumatic braking	20000 kg (44092 lb)	20000 kg (44092 lb)	20000 kg (44092 lb)	20000 kg (44092 lb)

## TIRES

Machine model	SAMSON 65.8 VS EVO2	SAMSON 65.8 VS EVO2	SAMSON 60.9 VS EVO2	SAMSON 60.9 VS EVO2
Standard tires	18x22.5"	18x22.5"	18x22.5"	18x22.5"
Optional tires	500/70R24"; 17.5R25"	500/70R24"; 17.5R25"	500/70R24"; 17.5R25"	500/70R24"; 17.5R25"

## DIMENSIONS

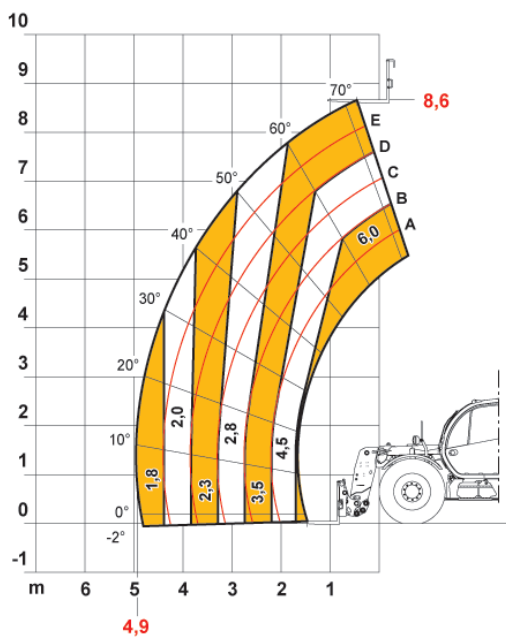
Machine model	SAMSON 65.8 VS EVO2	SAMSON 65.8 VS EVO2	SAMSON 60.9 VS EVO2	SAMSON 60.9 VS EVO2
A	395 mm (15,6 in)	395 mm (15,6 in)	395 mm (15,6 in)	395 mm (15,6 in)
B	1505 mm (59,3 in)	1505 mm (59,3 in)	1505 mm (59,3 in)	1505 mm (59,3 in)
C	2800 mm (110,2 in)	2800 mm (110,2 in)	2800 mm (110,2 in)	2800 mm (110,2 in)
D	1050 mm (41,3 in)	1050 mm (41,3 in)	1050 mm (41,3 in)	1050 mm (41,3 in)
F	4435 mm (174,6 in)	4435 mm (174,6 in)	4435 mm (174,6 in)	4435 mm (174,6 in)
G	5005 mm (197 in)	5005 mm (197 in)	5355 mm (210,8 in)	5355 mm (210,8 in)
H	2495 mm (98,2 in)	2495 mm (98,2 in)	2495 mm (98,2 in)	2495 mm (98,2 in)
I	940 mm (37 in)	940 mm (37 in)	940 mm (37 in)	940 mm (37 in)
L	1920 mm (75,6 in)	1920 mm (75,6 in)	1920 mm (75,6 in)	1920 mm (75,6 in)
M	2390 mm (94,1 in)	2390 mm (94,1 in)	2390 mm (94,1 in)	2390 mm (94,1 in)
O	4350 mm (171,3 in)	4350 mm (171,3 in)	4550 mm (179,1 in)	4550 mm (179,1 in)
P	1700 mm (66,9 in)	1700 mm (66,9 in)	1700 mm (66,9 in)	1700 mm (66,9 in)
Q	4400 mm (173,2 in)	4400 mm (173,2 in)	4400 mm (173,2 in)	4400 mm (173,2 in)
T	145 mm (5,7 in)	145 mm (5,7 in)	145 mm (5,7 in)	145 mm (5,7 in)



MAX 6,0 t



AXB1505



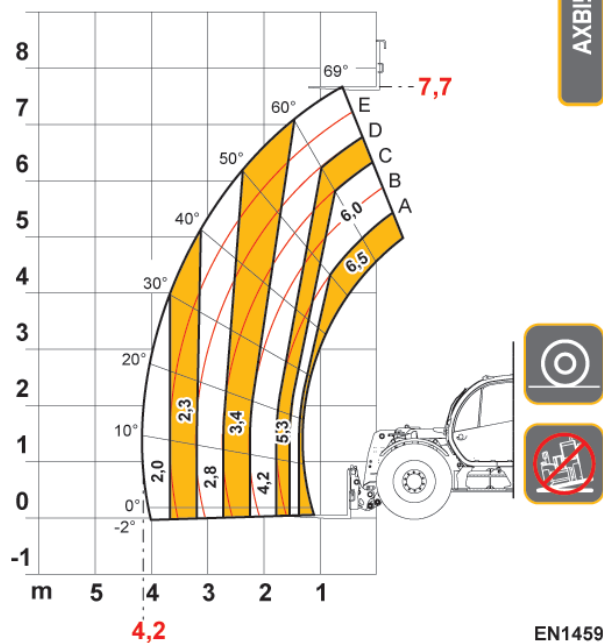
EN1459

60.9

MAX 6,5 t



AXB1504



EN1459

65.8

Dieci Srl - Via E. Majorana, 2-4 - 42027 - Montecchio Emilia (RE) ITALY

Tel. +39 0522 869611 - Fax +39 0522 869798 - E-mail: info@dieci.com - www.dieci.com

SKT Samson VS EVO2 EC -UK | v. 1.4