

**PACKED WITH  
SMARTNESS**

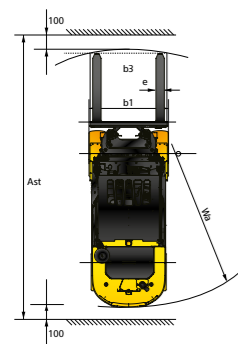
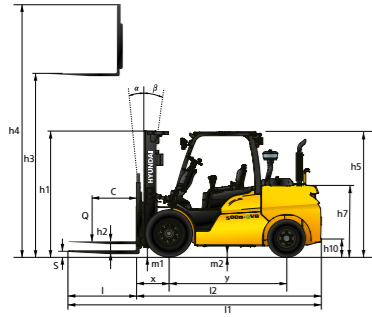
**STAGE**



**40/45D 50DN-9VC**  
**35/40/45D 50DN-9VB**  
**TECHNICAL SPECIFICATIONS**

Diesel Forklift Truck

# SPECIFICATIONS



Main characteristics	1.1	Manufacturer			Hyundai	Hyundai	Hyundai
	1.2	Manufacturer's model designation			40D-9VC	45D-9VC	50DN-9VC
	1.3	Drive			Diesel	Diesel	Diesel
	1.4	Type of operation			Seated	Seated	Seated
	1.5	Load capacity	C	kg	4,000	4,500	4,990
Weights	1.6	Load centre distance	x	mm	500	500	500
	1.8	Load distance (centre of drive axle to fork)	y	mm	561	561	561
	1.9	Wheelbase		mm	2,030	2,030	2,100
	2.1	Service weight		kg	5,851	6,405	6,860
	2.2	Axle loading, loaded	front/rear	kg	8,988 / 863	9,895 / 1,010	10,667 / 1,183
Tyres/chassis	2.3	Axle loading, unloaded	front/rear	kg	2,700 / 3,151	2,822 / 3,584	2,919 / 3,942
	3.1	Tyres			Pneumatic	Pneumatic	Pneumatic
	3.2	Tyre size	front		8.25-15-14PR	300-15-18PR*	300-15-18PR*
	3.3	Tyre size	rear		7.00-12-14PR	7.00-12-14PR*	7.00-12-14PR*
	3.5	No. of wheels (x= driven wheels)	front/rear		2x2	2x2	2x2
Dimensions	3.6	Tread	front	mm	1,132	1,282	1,282
	3.7	Tread	rear	mm	1,140	1,140	1,140
	4.1	Tilt of mast/fork carriage forward/backward	$\alpha / \beta$	degree	8/10	8/10	8/10
	4.2	Height, mast lowered	h1	mm	2,235	2,220	2,220
	4.3	Free lift	h2	mm	120	120	120
	4.4	Lift height	h3	mm	3,020	3,020	3,020
	4.5	Height, mast extended	h4	mm	4,234	4,234	4,234
	4.7	Height of overhead guard (cabin)	h5	mm	2,350	2,340	2,340
	4.8	Seat height/stand height rel. to SIP	h7	mm	1,316	1,304	1,304
	4.12	Coupling height	h10	mm	372	372	360
	4.19	Overall length	l1	mm	4,219	4,284	4,504
	4.20	Length to face of forks	l2	mm	3,149	3,204	3,284
	4.21	Overall width	b1	mm	1,370	1,746	1,746
	4.22	Fork dimensions	l x e x s	mm	50x122x1,070	50x150x1,070	50x150x1,220
	4.23	Fork carriage ISO 2328, Class/Type A, B			III / A	III / A	III / A
	4.24	Fork carriage width	b3	mm	1,300	1,600	1,600
	4.31	Ground clearance, below mast, loaded	m1	mm	170	155	155
	4.32	Ground clearance, centre of wheelbase	m2	mm	202	202	190
	4.34.1	Aisle width for pallets 1,000 x 1,200 crossways	Ast	mm	4,656	4,705	4,799
4.34.2	Aisle width for pallets 800 x 1,200 lengthways	Ast	mm	4,856	4,905	4,999	
4.35	Turning radius	Wa	mm	2,895	2,944	3,038	
4.36	Smallest pivot point distance		mm	1,023	1,023	1,074	
Performance data	5.1	Travel speed	loaded/unloaded	km/h	26.4/29.2	26.2/28.4	25.9/28.2
	5.2	Lift speed	loaded/unloaded	nm/s	510/540	510/540	480/540
	5.3	Lowering speed	loaded/unloaded	nm/s	550/550	550/550	550/550
	5.6	Max. drawbar pull	loaded/unloaded	N	41,751/39,407	41,506/40,430	41,536/40,346
	5.8	Max. gradeability	loaded/unloaded	%	42.2/25.1	37.2/24.1	33.9/23.4
	5.10	Service brake			Hydraulic	Hydraulic	Hydraulic
Engine	7.1	Engine manufacturer/type			HMC D4CC	HMC D4CC	HMC D4CC
	7.2	Engine power acc. to ISO 1585		kW/rpm	54.4/2,200	54.4/2,200	54.4/2,200
	7.3	Maximum torque		kgf·m/rpm	34.5/1,500	34.5/1,500	34.5/1,500
	7.4	No. of cylinders/displacement		EA/cc	4/2,891	4/2,891	4/2,891
	7.5	Fuel consumption acc. to VDI cycle		l/h	3.5	3.8	4.0
Additional data	8.1	Type of drive control		AC	Power Shift	Power Shift	Power Shift
	8.2	Operating pressure, system/attachments		bar	210/140	210/140	210/140
	8.3	Oil volume for attachments		LPM	60	60	60
	8.5	Trailer coupling, DIN type			PIN	PIN	PIN

\* The above specifications are based on a V300 mast.

\* In accordance with guideline 2198, this specification sheet provides details for the standard truck only. Non-standard tyres, different masts, optional equipment, etc. may result in different values.

Main characteristics	1.1	Manufacturer			Hyundai	Hyundai	Hyundai	Hyundai
	1.2	Manufacturer's model designation			35D-9VB	40D-9VB	45D-9VB	50DN-9VB
	1.3	Drive			Diesel	Diesel	Diesel	Diesel
	1.4	Type of operation			Seated	Seated	Seated	Seated
	1.5	Load capacity	C	kg	3,500	4,000	4,500	4,990
Weights	1.6	Load centre distance	x	mm	600	600	600	600
	1.8	Load distance (centre of drive axle to fork)	y	mm	561	561	561	576
	1.9	Wheelbase		mm	2,030	2,030	2,100	2,100
	2.1	Service weight		kg	5,851	6,405	6,860	7,264
	2.2	Axle loading, loaded	front/rear	kg	8,202 / 1,149	9,109 / 1,296	9,906 / 1,454	10,749 / 1,515
Tyres/chassis	2.3	Axle loading, unloaded	front/rear	kg	2,700 / 3,151	2,822 / 3,584	2,919 / 3,942	2,949 / 4,315
	3.1	Tyres			Pneumatic	Pneumatic	Pneumatic	Pneumatic
	3.2	Tyre size	front		8.25-15-14PR	7.50-16-12PR	7.50-16-12PR	7.50-16-12PR
	3.3	Tyre size	rear		7.00-12-14PR	7.00-12-14PR	7.00-12-14PR	7.00-12-14PR
	3.5	No. of wheels (x= driven wheels)	front/rear		2x2	4x2	4x2	4x2
Dimensions	3.6	Tread	front	mm	1,132	1,282	1,282	1,282
	3.7	Tread	rear	mm	1,140	1,140	1,140	1,140
	4.1	Tilt of mast/fork carriage forward/backward	$\alpha / \beta$	degree	8/10	8/10	8/10	8/10
	4.2	Height, mast lowered	h1	mm	2,235	2,220	2,220	2,220
	4.3	Free lift	h2	mm	120	120	120	120
	4.4	Lift height	h3	mm	3,020	3,020	3,020	2,930
	4.5	Height, mast extended	h4	mm	4,234	4,234	4,234	4,147
	4.7	Height of	overhead guard cabin	h5	mm	2,350 2,360	2,340 2,350	2,340 2,350
	4.8	Seat height/stand height rel. to SIP	h7	mm	1,316	1,304	1,304	1,304
	4.12	Coupling height	h10	mm	372	372	360	360
	4.19	Overall length	l1	mm	4,219	4,284	4,504	4,547
	4.20	Length to face of forks	l2	mm	3,149	3,204	3,284	3,347
	4.21	Overall width	b1	mm	1,370	1,746	1,746	1,746
	4.22	Fork dimensions	l x e x s	mm	50x122x1,070	50x150x1,070	50x150x1,220	60x150x1,200
	4.23	Fork carriage ISO 2328, Class/Type A, B			III / A	III / A	III / A	III / A
	4.24	Fork carriage width	b3	mm	1,300	1,600	1,600	1,600
	4.31	Ground clearance, below mast, loaded	m1	mm	170	155	155	155
	4.32	Ground clearance, centre of wheelbase	m2	mm	202	202	190	190
	4.34.1	Aisle width for pallets 1,000 x 1,200 crossways	Ast	mm	4,656	4,705	4,799	4,857
4.34.2	Aisle width for pallets 800 x 1,200 lengthways	Ast	mm	4,856	4,905	4,999	5,057	
4.35	Turning radius	Wa	mm	2,895	2,944	3,038	3,081	
4.36	Smallest pivot point distance		mm	1,023	1,023	1,074	1,074	
Performance data	5.1	Travel speed	loaded/unloaded	km/h	26.8/29.2	26.5/28.4	26.1/28.2	25.8/28.1
	5.2	Lift speed	loaded/unloaded	nm/s	520/540	510/540	510/540	410/460
	5.3	Lowering speed	loaded/unloaded	nm/s	550/550	550/550	550/550	500/550
	5.6	Max. drawbar pull	loaded/unloaded	N	41,432/39,409	41,382/40,430	41,405/40,346	41,460/40,256
	5.8	Max. gradeability	loaded/unloaded	%	44.5/25.1	39.2/24.1	35.4/23.4	32.6/22.3
	5.10	Service brake			Hydraulic	Hydraulic	Hydraulic	Hydraulic
Engine	7.1	Engine manufacturer/type			HMC D4CC	HMC D4CC	HMC D4CC	HMC D4CC
	7.2	Engine power acc. to ISO 1585		kW/rpm	54.4/2,200	54.4/2,200	54.4/2,200	54.4/2,200
	7.3	Maximum torque		kgf·m/rpm	34.5/1,500	34.5/1,500	34.5/1,500	34.5/1,500
	7.4	No. of cylinders/displacement		EA/cc	4/2,891	4/2,891	4/2,891	4/2,891
	7.5	Fuel consumption acc. to VDI cycle		l/h	3.5	3.8	4.0	4.4
Additional data	8.1	Type of drive control		AC	Power Shift	Power Shift	Power Shift	Power Shift
	8.2	Operating pressure, system/attachments		bar	210/140	210/140	210/140	210/140
	8.3	Oil volume for attachments		LPM	60	60	60	60
	8.5	Trailer coupling, DIN type			PIN	PIN	PIN	PIN

\* The above specifications are based on a V300 mast.

\* In accordance with guideline 2198, this specification sheet provides details for the standard truck only. Non-standard tyres, different masts, optional equipment, etc. may result in different values.

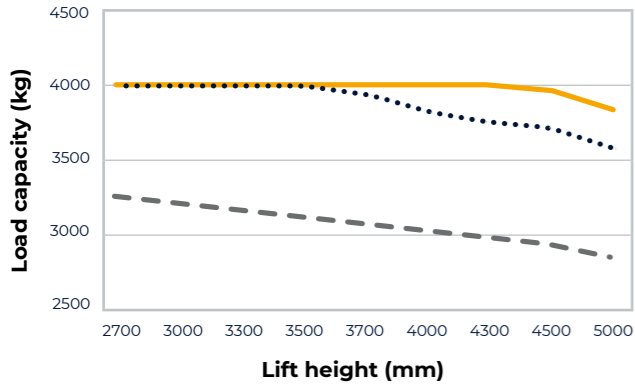
# LOAD CAPACITY

— LC500 mm    ··· LC600 mm    - - - LC1000 mm

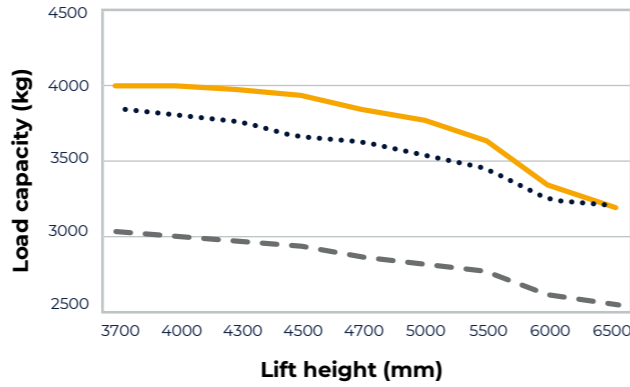
— LC600 mm    ··· LC800 mm    - - - LC1000 mm

## 40D-9VC

2-stage mast

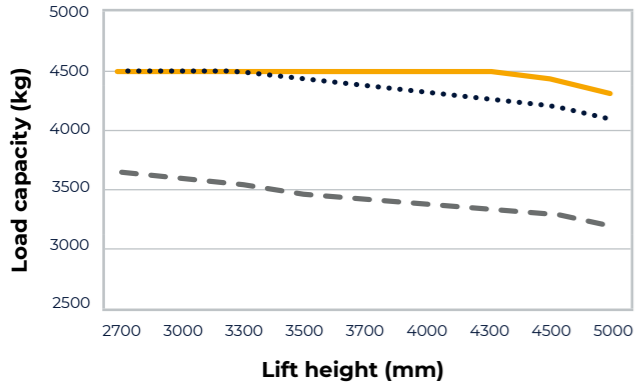


3-stage mast

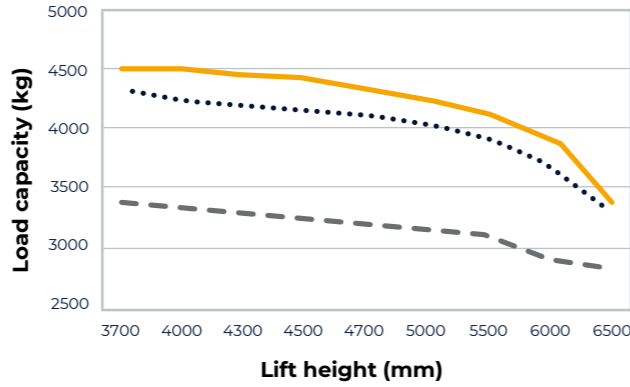


## 45D-9VC

2-stage mast

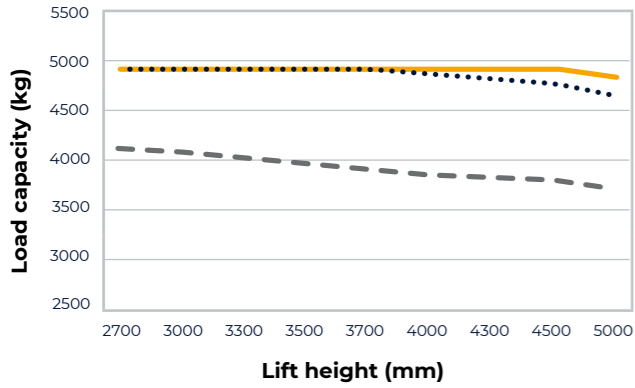


3-stage mast

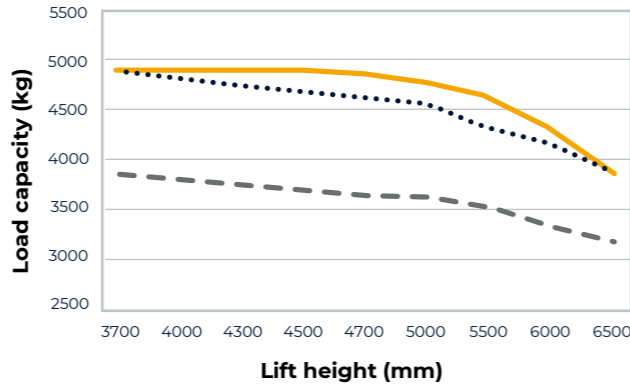


## 50DN-9VC

2-stage mast

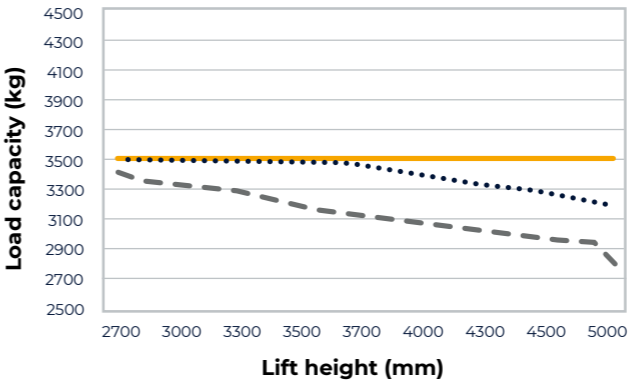


3-stage mast

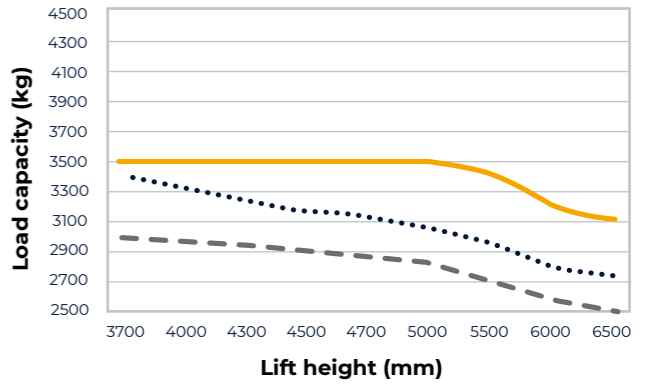


## 35D-9VB

2-stage mast

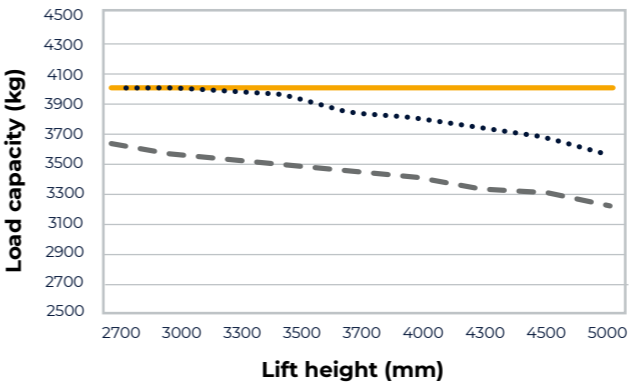


3-stage mast

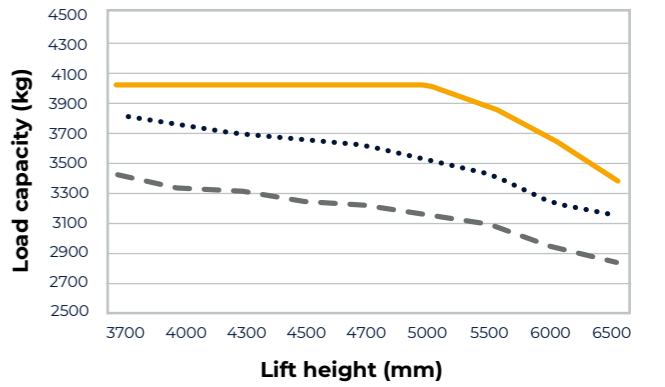


## 40D-9VB

2-stage mast

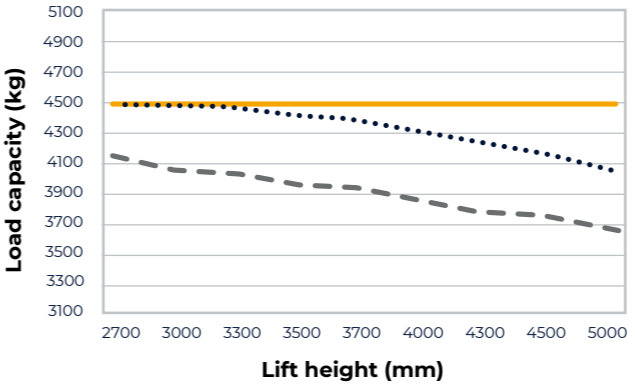


3-stage mast

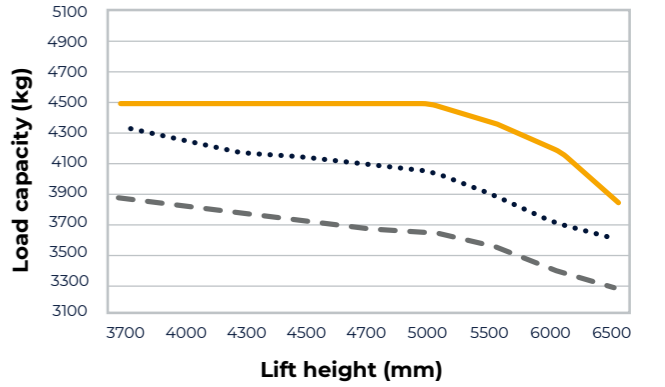


## 45D-9VB

2-stage mast

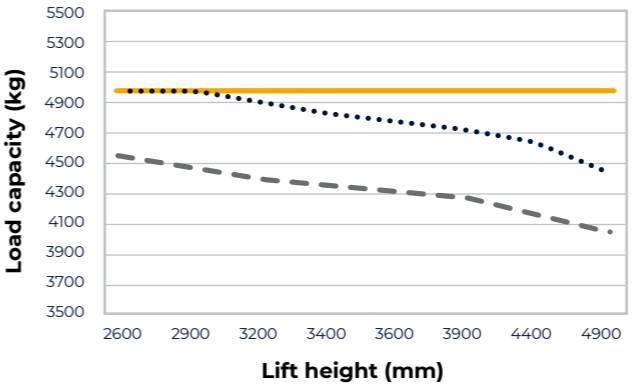


3-stage mast

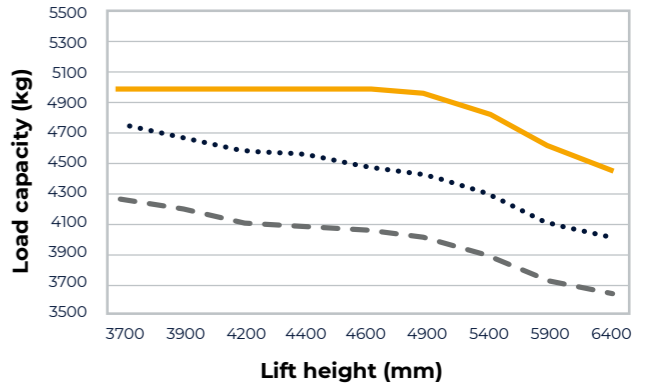


## 50DN-9VB

2-stage mast



3-stage mast



The capacity is based on the standard carriage and length of forks.







# STANDARD EQUIPMENT & OPTIONS

	Part	Description	40D-9VC 35D-9VB	45D-9VC 40D-9VB	50DN-9VC 45D-9VB	50DN-9VB
Cabin and overhead guard	OHG	Overhead guard *40D-9VC, 35D-9VB: 2,350mm / 45D-9VC, 50DN-9VC, 40/45D-9VB, 50DN-9VB: 2,340mm	●	●	●	●
		Overhead guard with rain cover *40D-9VC, 35D-9VB: 2,360mm / 45D-9VC, 50DN-9VC, 40/45D-9VB, 50DN-9VB: 2,350mm	○	○	○	○
		Low overhead guard with rain cover *40D-9VC, 35D-9VB: 2,230mm / 45D-9VC, 50DN-9VC, 40/45D-9VB, 50DN-9VB: 2,220mm	○	○	○	○
	Cabin	Cabin options: one door, two door	○	○	○	○
		Partial cabin: front glass with wiper, rear glass & top rain cover	○	○	○	○
	A/C	Air conditioner and/or heater	○	○	○	○
	Seat	Full suspension synthetic leather seat + orange belt, seat switch	●	●	●	●
		Additional options for full suspension seat: arm rest, back rest, belt switch, heat	○	○	○	○
	Lever	Lever - manual	●	●	●	●
		Lever - fingertip control	○	○	○	○
Ect.	Radio & USB	○	○	○	○	
	Rear horn grip	○	○	○	○	
Mast & attachment	Mast	2-stage mast - standard (V)	●	●	●	●
		2-stage mast - single full free (VF)	○	○	○	○
		3-stage mast - single full free (TF), dual full free (TS)	○	○	○	○
	Fork	1,220 mm for 40/45D-9VC, 50DN-9VC, 35/40/45D-9VB, 1,200 mm for 50DN-9VB	●	●	●	●
		900 mm - 2,300 mm	○	○	○	○
	Carriage	Narrow (1,300 mm / hook)	●	●	●	●
Class IV		-	-	○	○	
Attach-ment	Cascade side shift - hook-on	○	○	○	○	
	Fork positioner & side shift - hook-on	○	○	○	○	
Hydraulics	MCV & hoses	3 spool MCV + attached piping for V330 mast	●	●	●	●
		MCV options - 4 spool (only for manual lever)	○	○	○	○
		MCV options - 5 spool (only for manual lever)	○	○	○	○
		Attached piping for all MCVs & masts	○	○	○	○
Tyres	Tyres options	Tyre - pneumatic (single for 40D-9VC, 35D-9VB, double for 45D-9VC, 50DN-9VC, 40/45D-9VB, 50Dn-9VB) * Wheel rim size: single 15", double 16"	●	●	●	●
		Solid	○	○	○	○
		Non-marking	○	○	○	○
Visibility	Lamp	Working lamp - front halogen	●	●	●	●
		Working lamp options - front LED, rear LED, rear bulb	○	○	○	○
		Rear Blue Spot	○	○	○	○
		LED beacon lamp	○	○	○	○
	Mirror	Mirror - panorama	●	●	●	●
Convenience	Camera	Rear view camera only	○	○	○	○
		Knob switch with direction & horn	●	●	●	●
		Auto tilt levelling	○	○	○	○
		Load indicator	○	○	○	○
Safety	Other	Hydraulic pressure indication on display	●	●	●	●
		OPSS - travel & mast	●	●	●	●
		Master switch to cut off electricity from battery	●	●	●	●
		Hazard switch	○	○	○	○
Other	Other	Recycling option (rear tyre cover + undercover)	○	○	○	○
		Fuel cap with key	●	●	●	●
		Hydraulic oil - ISO VG46 (Hyundai genuine long life hydraulic oil)	●	●	●	●
		Hydraulic oil options - ISO VG68 for tropical, ISO VG32 cold area (Hyundai genuine long life hydraulic oil), ISO VG15 cold area (conventional hydraulic oil)	○	○	○	○
	Accumulator	○	○	○	○	

● : STD  
○ : OPT  
- : Not available

# FEATURES & BENEFITS

**Main hydraulic component**

Variable piston pump      Load sensing MCV

Hydraulic power ↑

Efficiency improvement

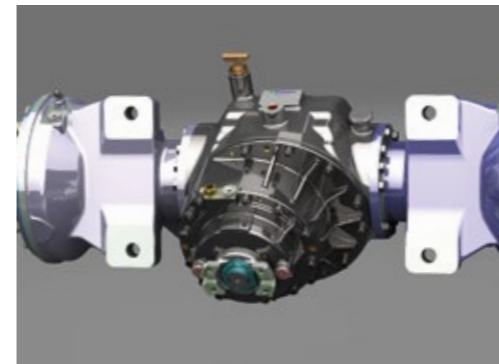
9F series

9VC/9VB series

Lever Control →

## Productivity & durability

- The HMC 54.4kW diesel engine meets EU Stage V regulations. As well as being environmentally friendly, it saves costs due to its low fuel consumption rates.
- The total cost of ownership (TCO) is dramatically reduced by the application of a load sensing (piston pump) type hydraulic system with an optimised engine. These improve fuel efficiency and workflow by 16.7% and 4% respectively.
- Clutch pack power transmission capability is enhanced by 25%, transmission oil is increased by 4 litres and durability under heavy load operation is also improved.
- The wheelbase has been extended to increase driving stability under loaded conditions, enhancing safety and convenience for the operator.



## Enhanced safety

- The Auto Parking brake is applied automatically when the engine is switched off.
- HAC (Hill-start Assist Control) prevents rolling backwards during drive-off.
- The OPSS (Operator Presence Sensing System), which works simultaneously with Auto Parking, restricts driving, lifting and tilting when the operator leaves the seat.
- Machine access is password-protected to prevent unauthorised use of the forklift.



## Outstanding comfort and control

- The optimised engine size and the LS hydraulic system reduce noise and vibration for the operator.
- The reduced steering wheel diameter and new Danfoss orbitrol combine to offer perfect machine handling.
- The deluxe Grammar suspension seat features an adjustable cushion and an ELR seat belt.
- The new optional fingertip control system has built-in dither control and controller current feedback systems. It improves response time and controllability regardless of the ambient temperature.



## Easy servicing

- The exhaust gas aftertreatment device can be maintained without removing the counterweight.
- The on-board diagnostic system reduces downtime, while the integrated maintenance management system simplifies maintenance follow-up.
- Machine covers are removable without tools, making it easy to access the main components for maintenance.
- The fuse & relay box is waterproof and dustproof.





\* Standard and optional equipment may vary by country. Contact your Hyundai dealer for more information.

\* The machine may vary according to International standards. European specifications may differ from Korean specifications mentioned in the brochures.

\* The photos may include attachments and optional equipment that are not available in your area.

\* Materials and specifications are subject to change without advance notice.

\* All imperial measurements are rounded off to the nearest pound or inch.

Hyundai Construction Equipment Europe NV  
Hyundailaan 4, 3980 Tessenderlo, Belgium  
Tel: (+32) 14-56-2200 Fax: (+32) 14-59-3405

Contact your Hyundai dealer.  
[hyundai-mh.eu](http://hyundai-mh.eu)

Address