

***PACKED WITH
SMARTNESS***

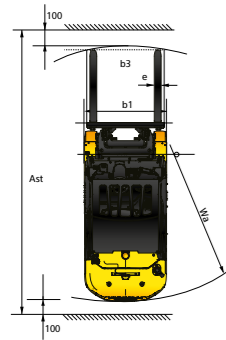
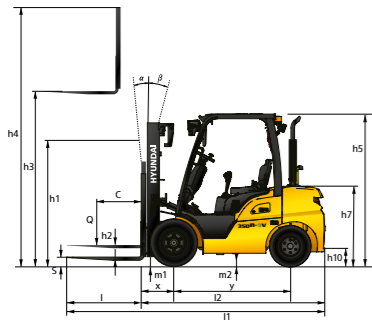
STAGE



25/30D/35DN-9V
TECHNICAL SPECIFICATIONS

Diesel Forklift Truck

SPECIFICATIONS

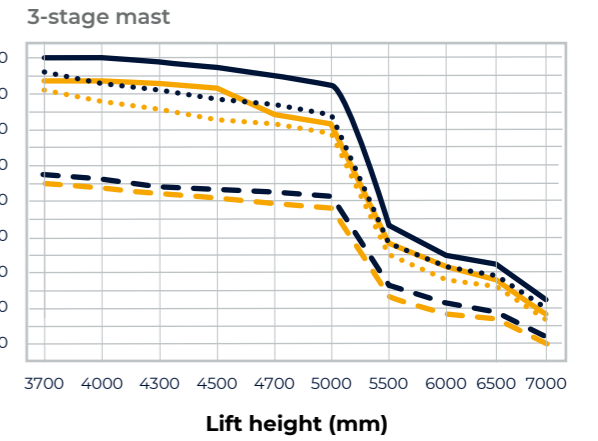
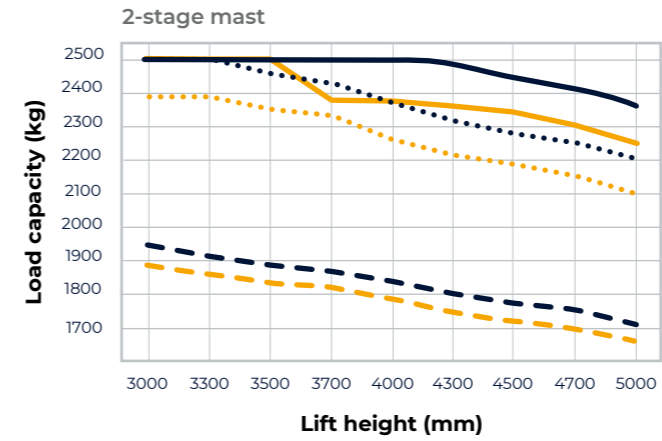


	Main characteristics		Manufacturer			
	1.1	1.2	Hyundai	Hyundai	Hyundai	
	1.2	Manufacturer's model designation	25D-9V	30D-9V	35DN-9V	
	1.3	Drive	Diesel	Diesel	Diesel	
	1.4	Type of operation	Seated	seated	seated	
	1.5	Load capacity	C	kg	2,500 / 3,000 / 3,500	
	1.6	Load centre distance	x	mm	500 / 500 / 500	
	1.8	Load distance (centre of drive axle to fork)	y	mm	468 / 468 / 468	
	1.9	Wheelbase		mm	1,650 / 1,700 / 1,700	
	2.1	Service weight		kg	3,871 / 4,300 / 4,616	
	2.2	Axle loading, loaded	front/rear	kg	5,548 / 823 / 6,349 / 951 / 7,080 / 1,035	
	2.3	Axle loading, unloaded	front/rear	kg	1,581 / 2,290 / 1,641 / 2,659 / 1,588 / 3,028	
	3.1	Tyres			Pneumatic / Pneumatic / Pneumatic	
	3.2	Tyre size	front		7.00-12-12PR / 8.15-15-14PR / 8.15-15-14PR	
	3.3	Tyre size	rear		6.50-10-12PR / 6.50-10-12PR / 6.50-10-12PR	
	3.5	No. of wheels (x= driven wheels)	front/rear		2x2 / 2x2 / 2x2	
	3.6	Tread	front	mm	999 / 1,005 / 1,005	
	3.7	Tread	rear	mm	980 / 980 / 980	
	4.1	Tilt of mast/fork carriage forward/backward	α / β	degree	6/10 / 6/10 / 6/10	
	4.2	Height, mast lowered	h1	mm	2,175 / 2,190 / 2,260	
	4.3	Free lift	h2	mm	155 / 155 / 155	
	4.4	Lift height	h3	mm	3,305 / 3,305 / 3,305	
	4.5	Height, mast extended	h4	mm	4,485 / 4,485 / 4,485	
	4.7	Height of	overhead guard	h5	mm	2,160 / 2,180 / 2,180
			cabin		2,170 / 2,190 / 2,190	
	4.8	Seat height/stand height rel. to SIP	h7	mm	1,187 / 1,207 / 1,208	
	4.12	Coupling height	h10	mm	310 / 300 / 295	
	4.19	Overall length	l1	mm	3,672 / 3,751 / 3,816	
	4.20	Length to face of forks	l2	mm	2,622 / 2,701 / 2,756	
	4.21	Overall width	b1	mm	1,200 / 1,230 / 1,230	
	4.22	Fork dimensions	l x e x s	mm	45x100x1050 / 45x122x1050 / 45x122x1050	
	4.23	Fork carriage ISO 232B, Class/Type A, B			2A / 3A / 3A	
	4.24	Fork carriage width	b3	mm	1102 / 1102 / 1102	
	4.31	Ground clearance, below mast, loaded	m1	mm	130 / 145 / 145	
	4.32	Ground clearance, centre of wheelbase	m2	mm	172 / 171 / 171	
	4.34.1	Aisle width for pallets 1,000 x 1,200 crossways	Ast	mm	4,020 / 4,095 / 4,148	
	4.34.2	Aisle width for pallets 800 x 1,200 lengthways	Ast	mm	4,220 / 4,295 / 4,348	
	4.35	Turning radius	Wa	mm	2,352 / 2,427 / 2,480	
	4.36	Smallest pivot point distance		mm	714 / 731 / 731	
	5.1	Travel speed	loaded/unloaded	km/h	16.4/17.7 / 17.2/18.8 / 16.9/18.8	
	5.2	Lift speed	loaded/unloaded	mm/s	580/610 / 580/610 / 480/500	
	5.3	Lowering speed	loaded/unloaded	mm/s	510/500 / 550/500 / 510/480	
	5.6	Max. drawbar pull	loaded/unloaded	N	27,399/25,957 / 25,777/24,257 / 26,016/24,162	
	5.8	Max. gradeability	loaded/unloaded	%	42.7/21.5 / 34.1/20.1 / 30.6/17.7	
	5.10	Service brake			Hydraulic / Hydraulic / Hydraulic	
	7.1	Engine manufacturer/type			HMC D4HB / HMC D4HB / HMC D4HB	
	7.2	Engine power acc. to ISO 1585		kW/rpm (hp/rpm)	47.8/2,300 (64.1/2,300) / 47.8/2,300 (64.1/2,300) / 47.8/2,300 (64.1/2,300)	
	7.3	Max. torque		kgf·m/rpm	24.1/1,600 / 24.1/1,600 / 24.1/1,600	
	7.4	No. of cylinders/displacement		EA/cc	4/2199 / 4/2199 / 4/2199	
	7.5	Fuel consumption acc. to VDI cycle		l/h	2.7 / 3 / 3.2	
	8.1	Type of drive control		AC	Power Shift / Power Shift / Power Shift	
	8.2	Operating pressure, system/attachments		bar	200/140 / 200/140 / 200/140	
	8.3	Oil volume for attachments		LPM	55 / 55 / 55	
	8.5	Trailer coupling, DIN type			PIN / PIN / PIN	

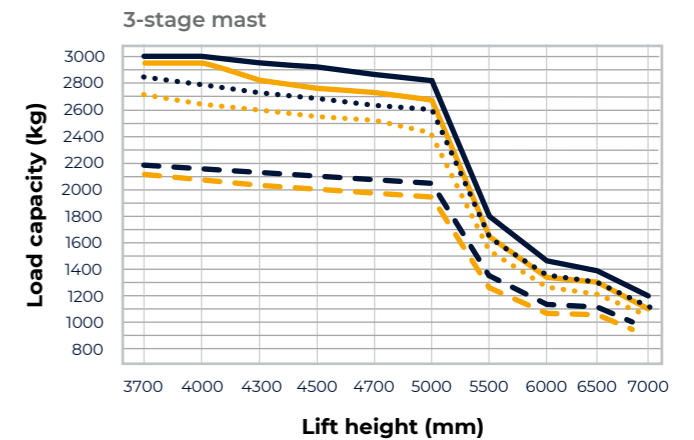
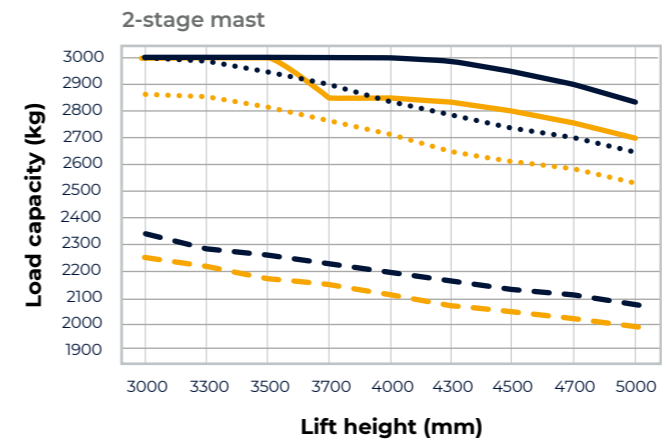
LOAD CAPACITY

- LC500 mm Intergrated side shift
- LC500 mm No attachment
- LC600 mm Intergrated side shift
- LC600 mm No attachment
- LC1000 mm Intergrated side shift
- LC1000 mm No attachment

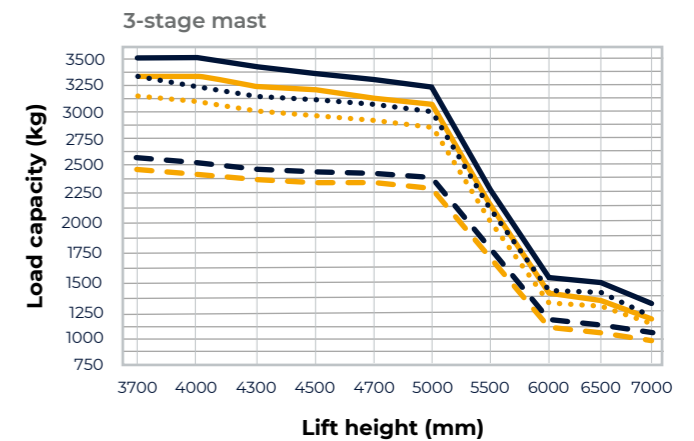
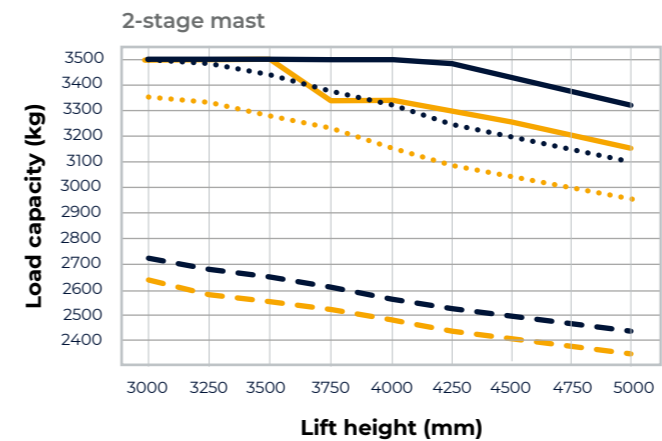
25D-9V



30D-9V



35DN-9V



* The above specifications are based on V300 mast.
 * In accordance with guideline 2198, this specification sheet provides details for the standard truck only. Non-standard tyres, different masts, optional equipment, etc. may result in different values.

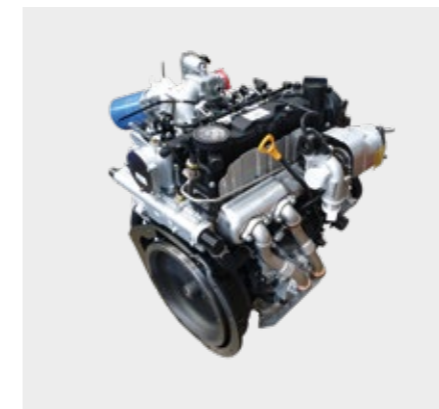
* The above specifications are based on standard forks.

STANDARD EQUIPMENT & OPTIONS

	Part	Description	25D-9V	30D-9V	35DN-9V
Cabin and overhead guard	OHG	Overhead guard *25D-9V: 2,160 mm, 30D-9V & 35DN-9V: 2,180 mm	●	●	●
		Overhead guard with rain cover *25D-9V: 2,170 mm, 30D-9V & 35DN-9V: 2,190 mm	○	○	○
	Cabin	Cabin options: one door, two door	○	○	○
		Partial cabin: front glass with wiper, rear glass & top rain cover	○	○	○
	A/C	Air conditioner and/or heater	○	○	○
		The air conditioning system contains fluorinated greenhouse gas refrigerant R134a (Global Warming Potential: 1,430). The system contains 0.55 kg refrigerant representing a CO ₂ equivalent of 0.787 metric tonnes.	○	○	○
	Seat	Full suspension synthetic leather seat + orange belt, arm rest, seat switch	●	●	●
		Seat accessories: long backrest, belt switch, heated seat	○	○	○
	Lever	Lever - general	●	●	●
		Lever - fingertip control	○	○	○
Ect.	Radio & USB	○	○	○	
	Rear horn grip	○	○	○	
Mast & attachment	Mast	2-stage mast - standard (V)	●	●	●
		2-stage mast - single full free (VF)	○	○	○
		3-stage mast - single full free (TF), dual full free (TS)	○	○	○
	Fork	1,200 mm	●	●	●
		900 mm - 2,300 mm	○	○	○
	Carriage	Narrow (1,102 mm / hook)	●	●	●
		Wide (1,442 mm / hook)	○	○	○
	Attachment	Hook-on side shift	○	○	○
		Integrated side shift	○	○	○
	Hydraulics	MCV & Hoses	3 spool MCV + attached piping for V330 mast	●	●
MCV options - 4 spool			○	○	○
Attached piping for all MCVs & masts			○	○	○
Brake - general type			●	●	●
Tyres	Tyres	Tyre - pneumatic (single)	●	●	●
		Solid	○	○	○
		Tyre options	○	○	○
Visibility	Lamp	Working lamp - front bulb	●	●	●
		Working lamp options - front LED, rear LED	○	○	○
		Rear blue spot	○	○	○
		LED beacon lamp	○	○	○
	Mirror	Mirror - panorama	●	●	●
Mirror options - LH & RH back mirror, outside Mirror		○	○	○	
Camera	Rear view camera only	○	○	○	
	Front & rear view camera	○	○	○	
Convenience	-	Knob switch with direction & horn	●	●	●
		Auto tilt levelling	○	○	○
		Load indicator	○	○	○
		Hydraulic pressure indication on display	●	●	●
Safety	-	OPSS - travel & mast	●	●	●
		Master switch to cut off electricity from battery	●	●	●
		Hazard switch	○	○	○
Other	-	Steel side cover	○	○	○
		Plastic side cover	●	●	●
		Recycling option (rear tyre cover + undercover)	○	○	○
		Fuel cap with key	○	○	○
		Pre-cleaner	●	●	●
		Hyd. oil - VG46	●	●	●
		Hyd. oil options - VG68 for tropical, VG15 & VG32 for cold areas	○	○	○
Accumulator - mast damping	○	○	○		

● : STD / ○ : OPT

FEATURES & BENEFITS



Productivity & durability

- The HMC D4HB 47.8kW diesel engine meets EU Stage V regulations. The operator can adapt the engine power to different working conditions by switching between Power and Standard modes.
- The new Hyundai Core Motion electronic proportional transmission is controlled by a transmission control unit (TCU).
- Drive-off performance and creep speed are adjustable via the cluster. Fine controllability is improved by an electronic inching system.
- Starting and driving characteristics remain consistent, regardless of the weight or temperature fluctuation of the transmission oil.
- The new Hyundai Core Motion drive axle has a higher volume of drive axle oil to prolong the lifespan of the wet disc brake system.



Enhanced safety

- The Auto Parking brake is applied automatically when the engine is switched off.
- HAC (Hill-start Assist Control) activates the parking brake when stopping on a slope and prevents rolling backwards during drive-off.
- The OPSS (Operator Presence Sensing System), which works simultaneously with Auto Parking, restricts driving, lifting and tilting when the operator leaves the seat.
- With the optional seat belt interlock system, the driver can only operate the machine when wearing the seat belt.
- Machine access is password-protected to prevent unauthorised use of the forklift.



Outstanding comfort and control

- The reduced steering wheel diameter and new Danfoss orbitrol combine to offer perfect machine handling.
- The high-quality Grammer seat features a wider cushion and an ELR seat belt.
- The cluster is enhanced with an improved design and features including an integrated MCU (Machine Control Unit), less wiring and fewer components for increased durability.
- The optional fingertip system with a new MCV (by Buchholz) ensures improved feel and response time along with extended fine-tuning possibilities.



Easy servicing

- The DPF device can be serviced or replaced without removing the counterweight.
- Extended on-board diagnostics and monitoring (e.g., DPF regeneration progress) are provided via the cluster.
- The fuse & relay box is waterproof and dustproof.



* Standard and optional equipment may vary by country. Contact your Hyundai dealer for more information.

* The machine may vary according to International standards. European specifications may differ from Korean specifications mentioned in the brochures.

* The photos may include attachments and optional equipment that are not available in your area.

* Materials and specifications are subject to change without advance notice.

* All imperial measurements are rounded off to the nearest pound or inch.

Hyundai Construction Equipment Europe NV
Hyundailaan 4, 3980 Tessenderlo, Belgium
Tel: (+32) 14-56-2200 Fax: (+32) 14-59-3405

Contact your Hyundai dealer.
hyundai-mh.eu

Address